

Welcome to the RSA Fellowship newsletter - 10 January 2011 - Happy New Year!

In this issue:

[Join us in Newcastle](#) | [State of the Arts 2011](#) | [Next steps for the Travelling Pantry workshops](#)
[Fellow's Profile - Susana Frazao Pinheiro](#) | [Fellowship directory](#)

News and Events



Join us in Newcastle - 24 January 2011

On 24 January, RSA NE and Northumbria University will launch a cultural partnership, with the aim of creating a vibrant programme of collaborative work in the North East. This is the next in a series of FRSA Hub events following on from the [Sheffield event](#) held in October.

Fellows from across the local area, will discuss current and upcoming projects in the North East region of England. [Read more...](#)



State of the Arts 2011 - Book now!

The 2011 [State of the Arts conference](#) hosted by the RSA and Arts Council England, is on **Thursday 10 February**. State of the Arts is the only major conference where you can hear a diverse array of key figures from across the UK arts world, address the urgent issues presently facing the arts and cultural sector. [Book now to confirm your place.](#)

Speakers include:

- o Jeremy Hunt MP, Secretary of State for Culture, Olympics, Media and Sport (invited)
- o Ivan Lewis MP, shadow Secretary of State for Culture, Olympics, Media and Sport
- o Michael Boyd, RSC
- o Mark Wallinger, artist
- o Julia Peyton-Jones, Serpentine Gallery
- o Candace Allen, author
- o Jonathan Mills, Edinburgh International Festival
- o Tabitha Jackson, C4 Arts Editor
- o Yasmin Alibhai-Brown, journalist for The Independent
- o Matthew Taylor and Luke Johnson, RSA
- o Dame Liz Forgan and Alan Davey, Arts Council England.

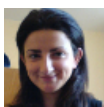
For detailed programme information, [visit the State of the Arts web page.](#)



Next steps for the Travelling Pantry workshops

As you may have seen in an [August 10 issue](#) of the Fellowship newsletter, the Travelling Pantry is a workshop based action research project developed by Tessy Britton FRSA. It has a specific focus to stimulate and help new project development in communities. During Autumn 2010 RSA Fellows have hosted and supported pantry events in Stoke-on-Trent, Glasgow, Cardiff and Brighton.

Over the first few weeks of 2011, further Fellow-led workshops are planned for Cumbria, Darlington, Manchester and Northampton. Based on different themes specific to each community, Fellows are encouraged to attend. [Read more...](#)



Fellow's Profile - Susana Frazao Pinheiro

Susana Frazao Pinheiro FRSA is director of [Local InSight Global Impact](#) (LIGI), a social enterprise headquartered in Portugal. She talks here of her work and why she joined the Fellowship:

"Local InSight Global Impact (LIGI) is a social enterprise dedicated to finding sustainable and innovative models to prevent the spread and impact of disease, with a particular focus on HIV/AIDS, through education, research, stakeholder engagement and community co-creation. I have been working on HIV/AIDS for about 15 years. After a Doctorate in HIV Immunology at Oxford and a scholarship to the Skoll Center for Social Entrepreneurship, I started to think of different and innovative ways to make health care and HIV/AIDS prevention, education and treatment widely

In brief

A selection of activities taking place worldwide...

New RSA Comment article - Towards Tomorrow's Investor

Do you know what your pension charges are? David Pitt Watson FRSA reports on an RSA project aiming to change people's pension options and [seeks your help.](#)

Visit [RSA Comment.](#)

Trustee Elections

[Preview the slate](#) for the upcoming Trustee Elections. Voting starts on **21 January** and closes on **18 February 2011.**

Birmingham

Join us for a special meeting of the Birmingham local network. Organised by Keith Horsfall FRSA, and taking place on **Saturday 22 January, 10am**, the focus is on food and its role in innovative social development. The event will take place at the [Mint Cuisine.](#)



Activities on the day include: a discussion about the importance of food to the Bangladeshi community; introduction to spices and some cooking techniques; exploring heritage through food; a cooking demonstration, finishing with lunch.

Tickets are £10. To book your place please contact [Keith Horsfall.](#)

London

The Vinten lecture will be held this year on **Tuesday 18 January, 6.30pm.** Lord Ramsbotham GCB, CBE will look at "What price imprisonment". At the heart of Kenneth Clarke's 'Rehabilitation Revolution' is



Care and HIV/AIDS prevention, education and treatment widely accessible by thinking like an entrepreneur. LIGI have since been developing small community projects. We started a "Seed Bank" in a small village in order to empower economically and later create a community health fund. I am passionate about 2 areas: HIV and global health, and leveraging business skills for more impact in these areas and in society at large."

On joining the Fellowship: "I joined the Fellowship in 2006 after winning the social enterprise Award from Idea Idol, a competition run by Oxford Entrepreneurs at the University of Oxford. Our main idea was to develop an operationally and financially self-sustainable "health boat" in The Gambia. This is what later gave rise to Local InSight Global Impact."

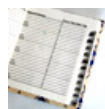
"Interacting with other Fellows and sharing ideas, experiences and tools is something I believe is very valuable. One other aspect, given our model/presence in some developing countries would be to help expand the outreach of the Fellowship/Society."

On what she would change in society given the chance: "Access to (reliable) information; often the lack of it is a greater impediment to development than we tend to think of. It can lead to another aspect I strive to contribute to: access to opportunities."

On some recent inspiring news: "Something I heard from a friend in Haiti inspired me; despite the devastating consequences of the quake a year ago, the current cholera outbreak and the more recent political instability and uncertainty, there is an incredible will and dynamism to take new initiatives further. We are currently co-developing a real time epidemiological surveillance tool whose pilot we aim at testing in Haiti. Whilst our concerns to ensure its proper implementation and sustainability have been several fold, the engagement and support of our local partners in Haiti has been paramount. This does inspire me everyday."

"I would like to connect to Fellows with experience and interest in global health and in applying science, technology and entrepreneurship for development. In terms of specific skills, exploring fundraising (the main hurdle we are trying to overcome) and potential strategic partnerships would both be of great value." [Editor's note - conversations on these and similar issues are taking place now on the [Social Entrepreneurs network](#)].

To connect with Susana about any of the above issues, you can contact her [via email](#).



Connect to other Fellows today

Are you making the most of the Fellowship directory? This 'opt-in' search directory of our 27,000 strong Fellowship provides an opportunity to find other Fellows all round the world. [Register now!](#)

And finally...

We hope you enjoyed this issue of the newsletter. We want this to work for you so please let us know your thoughts about the content and format.

Trouble reading this email? [View the latest and previous newsletters online](#).

Any news?

Communicating the activities of the Fellowship is the first step to strengthening the Fellowship network. As an RSA Fellow if there is anything you are doing in your area which other Fellows should know about and can get involved in, [please let us know](#).

We will only include items which relate to the goals of the RSA, where Fellows can get actively involved. Any decisions will be at the editor's discretion.

You have received this email as a Fellow of the RSA.

If you do not wish to receive this newsletter, you can [unsubscribe](#). You might miss out on the latest RSA news!

his wish to reduce the size of the prison population. This can only be achieved if a number of pre-conditions, which Lord Ramsbotham will explore in the lecture, are satisfied.

Tickets are £20. Contact [Elinor Pritchard](#) for more details and to book.

RSA

Join us on **Monday 24 January, 6pm**

for [Developing A](#)

[Sustainable Social Sector](#) as

Sir Ronald Cohen presents the findings of the final report of the Social Investment Task Force and recommends policy to sustain the increase in community development finance. [Book now](#).

Remember, you can [listen live](#) to our events, or you can subscribe to our [podcast](#) for past events.

Filmed events are available to watch on [RSA Vision](#) or you can [download the RSA Vision app](#). Android and iPhone version now available!

USA

The first [New York networking meeting](#) of the year takes place **January 11** at Hurley's, and in D.C. on **January 13** the Center for Policy on Emerging Technology invites Fellows to discuss [What really is innovation?](#)

Visit the [American Coffee House](#) for details of Fellows' events offered throughout the year. On **March 10**, Bill Pressly, author and professor of art history at the University of Maryland, will talk about [James Barry's murals](#) "The Progress of Human Culture", which reside in the RSA's Great Room.

Contact [Lynn Broadbent](#) with any questions about Fellowship and events in the U.S.

Nominate a Friend

Do you know someone who you think should be a Fellow? Do you have colleagues, friends or contacts who could benefit from the opportunities of Fellowship?

[Tell us who and why](#), and we'll send an invitation to apply citing your recommendation. Please note, you will need to log-in and have your membership

number handy to complete the form. If you have any questions, please contact the [Fellowship team](#).