



CATALYST AWARDS APPLICATION PACK

Committing to impact together

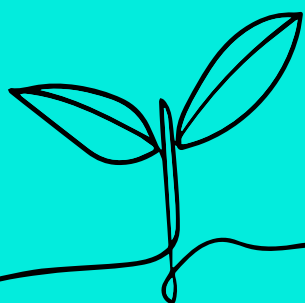
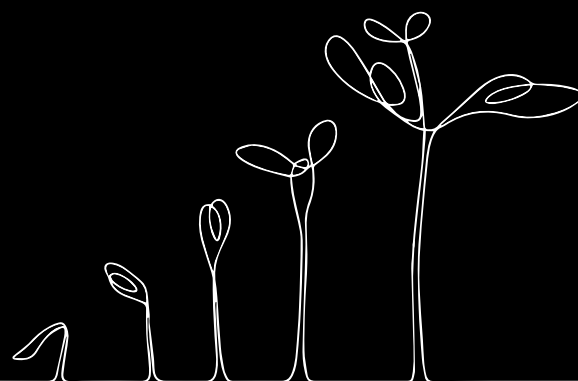
About Catalyst

We award £100,000 annually, supporting Fellows to test needed social change innovations and scale the social impact of their projects.

RSA Catalyst Awards offers social innovation grants and support to RSA Fellows. Each year we fund initiatives from our community, investing in projects that contribute to the RSA's efforts to create a better future.

We offer two types of **Catalyst Awards**: **£2,000 Seed Awards** and **£10,000 Scaling Awards**.

To be eligible, you must be an **RSA Fellow** - you can find out more about **RSA Fellowship**.



SEED AWARDS (£2,000)

Seed Awards can be used for early-stage projects in need of a financial boost to help them test the real-world potential and feasibility of an idea.

SEED AWARDS EXAMPLE:

ReDesigners empowers and enables young people to participate in climate change action in the Reading area. Young people will use a design-led approach to explore 'Waste and Consumption' in the community, and inform local climate strategy.

SCALING AWARDS (£10,000)

Scaling Awards can be used for growing projects that have already made a proven difference. By scale, we mean reaching new beneficiaries, deepening impact with existing beneficiaries, or exploring ways of becoming more financially sustainable.

SCALING AWARDS EXAMPLE:

Listen in at Roche Court uses a process-driven and experience-based learning approach to invite young people to create six podcast episodes interviewing significant contemporary artists exhibiting at the New Art Centre, Roche Court Sculpture Park. The students take ownership of entire episodes, developing overarching themes through questioning and research relating to each artist's work.

What do we fund?

We welcome applications for grants to support place-based interventions. By 'place-based', we mean interventions seeking to meet the unique needs of people within a specific geography. Projects will work collaboratively with those who live and work in the communities they want to reach to understand their needs and strengths.

Projects will focus on one or more of the following four strands below. Applicants will need to demonstrate a need for their project and provide a vision for how they will have a positive impact on project beneficiaries in one or more of these four areas.



Skills and employment

Projects working in a specific place to address skills gaps, create jobs, or address other factors that prevent the economic flourishing of particular communities.



Health and wellbeing

Projects working to ensure the health and wellbeing of those working in a specific place to improve health outcomes.



Education and learning

Projects working in a specific place with learners of any age, either in and outside of formal education, that focus on the broader purpose of education as developing individuals' capability and agency, as well as strengthening communities.



Community participation and decision-making

Projects working to ensure that citizens in a particular place connect, participate, and collaborate to improve their communities and develop agency over the key issues impacting them.

New regenerative funding stream offer

As part of the RSA's new **Design for Life** strategy, we are launching two additional grants (one £10k Scaling Award and one £2k Seed Award) and a new non-financial offer to enable grantees to have greater impact.

These grants will support applicants who are working with practices and approaches that are **regenerative**. By this we mean projects that are:

- **Having interconnected impacts** – are having a holistic net-positive impact on social, natural, and human systems, alongside considering environmental sustainability.
- **Strengthening connection** – are enabling people to reconnect in new ways to their communities, places, or the natural world to improve their resilience in the face of emerging challenges.
- **Power sharing** – are distributing power and resources internally as well as empowering the communities they are serving.



WHY APPLY FOR THIS FUNDING?

In addition to funding, projects will receive a bespoke package of support which will be discussed with their relationship manager. This may include: one-to-one regenerative mentoring, an opportunity to join a vibrant regenerative enterprise community of practice, and prioritised access to relevant events and resources.

In exchange, we are looking for grantees who are willing to:

- Take part in additional evaluation requirements.
- Work with the RSA to find a proactive approach to sharing their experience and learning with our community.

Like all other applicants to the Catalyst fund, all projects will still need to be place-based and will need to select one of our focus areas, which will describe the broad aims of the project.

These are:

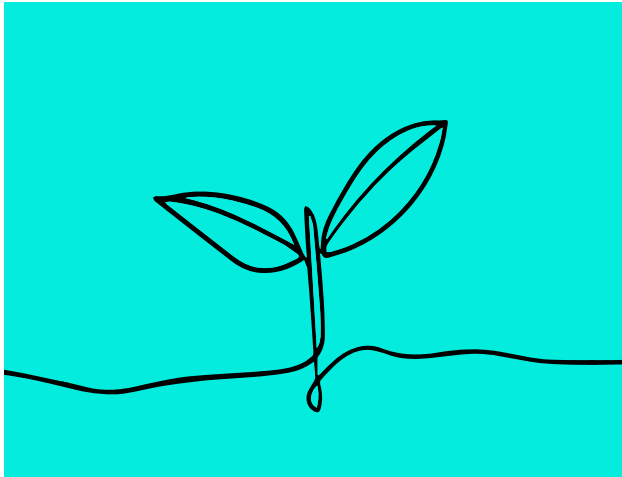
- Skills and employment.
- Health and wellbeing.
- Community participation and decision-making.
- Education and learning.

Projects that apply under this funding stream will still be considered for our other Awards, so will not be at any disadvantage as a result of opting into this funding stream. Applicants will have to answer two additional questions, focussing on the regenerative criteria above.

Please note that due to the nature of this additional funding, assessment processes may vary slightly from those described in this application pack.

Am I eligible?

You can apply from anywhere in the world, but to be eligible, you must be an RSA Fellow.



SEED AWARDS

To be eligible for a **Seed grant**, you do not need to apply as an organisation. We award seed grants to individuals as well as unincorporated groups.



SCALING AWARDS

To be eligible for a **Scaling grant**, you must apply as a registered organisation. See below for what types of organisation are fundable.

Fundable organisations in the UK will be registered as one of the following:

- a Charity or Non-profit.
- a Community Interest Company (CIC)
- a Company Limited by Shares (CLS) where it has an operational commitment to maintaining social purpose in the form of either an asset or mission lock within its governing document.
- an Industrial and Provident Society, Co-operative Society or Community Benefit Society where it has an operational commitment to maintaining a clear social purpose in the form of either an asset or mission lock within its governing document.

For applicants outside the UK, we will consider any equivalent organisation so long as we can search for the relevant registration.

Your organisation's annual income must also be less than £250k based on the last 12 months of accounts.

All projects must pass a public benefit test. As a registered charity in the UK, the RSA can only fund projects for exclusively charitable purposes as defined by the UK Charity Commission. For more information, please see the UK Charity Commission's pages on **public benefit**.

Guidance on budgets and allowable costs

Applications for both **Seed** and **Scaling Awards** should provide a clear budget. This should be a detailed budget breakdown, itemising the costs required for delivering the project.

The budget should total either **£2,000** or **£10,000** (depending on which grant you are applying for), and include:



Income. Please detail any income from other funders if applicable, including a description of what they are funding.



Expenditure. Please include a line for each cost and label it clearly, providing a calculation if necessary (e.g. day rates or monthly costs). It can be helpful to break spending down. You could do this by activity (listing all the costs required to carry out a part of the project, e.g. 'workshop delivery', or by cost type (e.g. staff costs, activity costs, operational costs etc.).

Some principles for developing your budget are that it should:



Be clear and transparent – provide as much detail as we need to understand why a cost is included and priced as it is.



Represent value for money – as the project is funded with charitable money, we expect that costs included represent value for money.

We fund social innovation projects, by which we mean a distinct intervention with a clearly defined beginning and end, and clearly defined objectives.

Money you get for your project can be used for:



Any costs relating to the delivery of the project, for example, staff costs, direct costs (such as equipment, venue hire etc.)



Overheads, to cover the ongoing expenses relating to the project.

The money you get for your project cannot be used for:



Existing staff posts or organisational costs **unless part of the cost of delivering the project.**



Legal and/or statutory responsibilities, in particular those that you would be liable whether or not you delivered your project.

How we assess applications

Our priorities when assessing applications are **Impact, Alignment and Suitability**. For each criteria, we have a number of sub-criteria that are scored on a scale of 1-3 based on the responses in the application form. A score of '1' means that the criteria is not met, and a '3' means that a criterion is strongly met.

The highest scoring applications are those that demonstrate all three criteria strongly.

The detailed criteria are as follows:

Impact

The project clearly outlines the issue it addresses and who it would benefit.

There are clear outcomes defined for assessing the project's impact.

The project team have the capability and capacity to deliver the intended impact.

Note: we consider partnerships as part of this criterion.

Alignment

The project contributes to the RSA's focus areas.

Catalyst grant funding will make a clear difference to the project.

It is clear why the RSA is well-suited to fund and support this particular project.

Suitability

The expenditure provided is clear and justifiable.

Seed Awards: There is a clear plan to test the feasibility of a new innovation.

Scaling Awards: There is clear evidence of an existing impact and how it would be scaled.

How we assess applications continued

We review all eligible applications against our standard application **criteria**, which help us find suitable, aligned, and impactful projects. Applications are reviewed by both a Reviewing Panel and a Community Panel.

1

STEP 1

Our **Catalyst team** reviews the applications to make sure they are all eligible under our guidelines, and a good fit for the fund.

2

STEP 2

A Reviewing Panel of RSA staff scores applications against the published criteria. All applications are scored twice, and an average score is taken.

3

STEP 3

The highest scoring applications are reviewed and discussed by a Community Panel consisting of RSA Fellows.

4

STEP 4

Decisions are announced and feedback is produced and distributed.

Feedback on our processes

The Catalyst programme is overseen and run by the fund programme manager working with service administrators and other colleagues.

Open	Always inclusive, transparent and honest, we welcome new thinking and different perspectives
Optimistic	We are confident that together, we can regenerate our world through collective action
Courageous	We champion curiosity, creativity and bravery to inspire better ways of thinking and doing
Rigorous	Rooted in evidence-led thinking, we act with integrity and purpose
Enabling	Through generosity, respect and collaboration, we help others succeed

We are committed to continuous improvement and value any feedback that might help us improve our processes. We also collect feedback from applications and our grantees to this end, a practice that we are continuously developing.

We aim to conduct ourselves and the programme by the RSA's values. If you would like to highlight a good experience, report a problem, or make a complaint about the Catalyst process, we encourage you to contact the **Catalyst team** directly.

If you remain dissatisfied, there is also an **RSA complaints procedure** that can be found [here](#).

How to apply



Confirm your Fellowship number and email address

To apply, you'll need your Fellowship number and the email address we currently hold for you so that we can link your Catalyst application to your account.

Confirm both of these under the 'My Account' section of **MyRSA**.

You can also call us on +44 (0)20 7451 6895 or email catalyst@rsa.org.uk.



Complete and submit your application through the Catalyst portal

A link to the Catalyst application portal can be found on our **Catalyst webpage** during application rounds. Once you have started an application, you can save and resume at any time before the deadline.

Word documents of the application form are available on the **Catalyst webpage**. These are for reference only and not a means of submitting an application.

If you require any adjustments to the application process, please get in touch with the **Catalyst team**.



As a reminder,

Please check the following before submitting:

- If you are applying on behalf of an organisation, please ensure it is fundable.
- You have provided a clear and detailed budget (this is the most common reason we disqualify projects).
- You are certain your project addresses an RSA focus area.
- You are certain your project fits the description of a **Seed** or **Scaling Award**.
- Your project has clear public benefit.

Timeline - March 2023 to June 2023

6th

March

Catalyst Awards applications open

3rd

April

Catalyst Awards applications close at 23:59 GMT

**April
& May**

Reviewing and Community panels

June

Decisions are announced to applicants

In the event that we need to make any changes to the timeline for any reason, we will notify all applicants by email.

Contact the Catalyst team

You can reach the Catalyst team
by email at catalyst@rsa.org.uk
or by phone on +44 (0)20 7451 6895