

Orientation Guide

Navigating your Fellowship



Welcome from the **RSA US Board**



There are many paths to exploring and accessing the potential of the network. We invite you to contribute to our ongoing initiatives.

We live in a moment when thoughtful, searching, open-minded, non-partisan, evidence-based conversation about opportunities for change in society, culture, and the economy is critical if not existential. This is the role the RSA Fellowship has played for over two hundred years, bringing those who appreciate Enlightenment principles into grappling with contemporary challenges seeking creative, human-centered solutions.

For me, this is why the RSA is so relevant at this time – exposure to and engagement with thoughtful conversation that is aimed toward how we, individually and collectively, can improve the human experience. The conversation involves Fellows from the broadest range of disciplines, experiences, origins, and geography.

RSA US offers this engagement among a nascent but growing cadre of like-minded individuals – like-minded in purposeful pursuit of ideas, yet wildly diverse in skills, backgrounds, and opinions of how to achieve an aligned view of progress. Our work with Fellows, together with the research and experimentation that emerges from RSA in London and around the world, seeks to influence society with real solutions.

My journey has focused on solving complex problems at the nexus of urban policy and economic development: as an intermediary between information and understanding in public broadcasting and communication design; and now in expanding an appreciation for creative collaboration, risk-taking, and human-centered design. RSA US has provided me with an outlet to help craft effective programs and public understanding around issues such as the future of work, universal basic income, responsible manufacturing, and sustainable practices.

I hope you find the RSA as rewarding as I do in these times of transition, uncertainty, and potential as we work together to move towards progress for all. The greatest value of this fellowship depends on all of us bringing our expertise, judgment, knowledge, energy, and networks to the table. We look forward to working with you to enhance the future well-being of our 21st century civilization.

RIC GREFÉ, FRSA

Board Chair, RSA US

A Note from **RSA US Director**



“
When I lived in London in 2007, I would go to events at the RSA house on John Adam Street and get my fill of philosophy and debate that envisioned a different world. The RSA was an incomparable intellectual brain trust at the time.
”

Since then, I've witnessed the RSA shift from a convening role to direct facilitator of societal change through innovative research, sparking networks for collective impact, and supporting Fellows in their desire for purpose and impact.

The power of the network has always been in our ability to attract a broad cross-section of society. Even from the beginning, notable Fellows like Adam Smith, Edmund Burke, and Karl Marx had very competing opinions on the 'good life' and how to get there. The RSA continues to be a home to different political ideologies, philosophical perspectives, and cultural and professional backgrounds, but it is the restless pursuit of the better society that unites our Fellows and staff in a common mission.

What draws me to the RSA is its deeply humanistic roots. The RSA's unique origins rest in a coffeehouse spirit of "informality" that brought together thinkers, makers, and merchants to hash out the issues of its time. It is an esteemed lineage of social collisions across silos that pioneered innovations in agriculture, economics, and labor practices that are still felt today.

That lineage connects to the present with constant reinvention driven by new generations of leaders adapting the RSA for the challenges of our age, whether that be the threat of automation, criminal justice reform and racial justice, or renewed civic infrastructure. Today, our network includes community activists and non-profit executives, foundation heads and corporate executives, media mavens and journalists, entrepreneurs and artists, and academics and policy-makers.

The RSA was founded on the simple belief that private citizens could pool their resources (knowledge, social, and financial capital) to support public improvements. I look forward to welcoming you to the Fellowship, and hope that your experience as a Fellow is a lifelong journey where you too can turn to the Society for inspiration, debate, collaborators, thought leadership, and for the amplification of your work and legacy.

ALEXA CLAY, FRSA

Director, RSA US

Fellowship Charter

WE BELIEVE IN



CONVENING
REASONED DEBATE



ENABLING
PEOPLE TO REALIZE CHANGE



INFLUENCING
KEY ORGANIZATIONS



DEMONSTRATING
PRACTICAL SOLUTIONS

We are a global community of active problem solvers. Our purpose is to unite people and ideas to resolve the challenges of our time. We believe in a world where everyone is able to participate in creating a better future.

OUR VALUES

OPEN

Always transparent and honest, we welcome new thinking and different perspectives.

OPTIMISTIC

We are confident that together, we can resolve the challenges of our time.

RIGOROUS

Rooted in evidence-led thinking, we act with integrity and purpose.

PIONEERING

We champion curiosity, creativity, and courage to inspire better ways of thinking and doing.

ENABLING

Through generosity and collaboration, we help others succeed.

Our Commitment to Progress for All

WE STRIVE TO

ENSURE

INCLUSION OF DIVERSE VOICES &
PERSPECTIVES AT EVENTS.

ENABLE

TIERED PRICING IN SUPPORT OF
DIFFERENT FINANCIAL ABILITIES.

RECRUIT

AMBASSADORS, STAFF & BOARD
MEMBERS FROM A BROAD RANGE OF
BACKGROUNDS & EXPERIENCES.

BUILD

EQUITY & DIVERSITY
CONSIDERATIONS INTO CORE
ORGANIZATIONAL METRICS.

RSA US recognizes diversity, equity, inclusion, and accessibility as critical factors determining our ability to work towards our mission to support and amplify ideas that drive social change.

As such, RSA US welcomes people of all racial and ethnic backgrounds, national origins, gender identities, sexual orientations, political parties, socioeconomic backgrounds, abilities, ages, and religious/spiritual backgrounds – and all the possible intersections that form a complete self-identity – to the US Fellowship community, events, and initiatives.

The RSA has historically represented a cross-section of society afforded various systemic power (e.g. white privilege, gender privilege, those with access to wealth or political influence). RSA US acknowledges that institutional obstacles like racism, classism, and gender discrimination have played a role in determining who has access to, is represented in, and feels comfortable as a member of the RSA Fellowship. We are actively committed to learning, growing, and eliminating these barriers.

As we work towards implementing internal structures that will ensure equitable access to opportunities, as well as a culture of inclusion and support for anyone impacted by our organization, we welcome all feedback that might help us continue to refine our practice. Thank you for joining us on this journey.

READ MORE

Seven Structural Pathways for Racial Equity

<https://www.thersa.org/discover/publications-and-articles/rsa-blogs/2020/06/seven-structural-pathways>

RSA US Statement on Intractable Racism

<https://www.thersa.org/fellowship/fellowship-news/fellowship-news/black-lives-matter>



The RSA is an unrivaled network for exploring world changing ideas and developing impactful relationships. I've been to RSA events in Tokyo, Edinburgh, London, Miami, Washington DC, Pittsburgh, San Francisco, and New York. When I travel, I make a point of connecting with extraordinary Fellows around the world.

Lolita Jackson, FRSA

Former RSA US Board Chair

Special Advisor, Climate Policy & Programs, NYC Mayor's Office



Table of Contents

SECTION 1	A Think Tank for the 99%	12
ABOUT THE RSA US FELLOWSHIP	The RSA Approach	14
	RSA US Ecosystem	15
	■ RSA US Staff	16
	Systems Entrepreneur in Residence	18
	RSA US Board	20
	RSA US Regional Hubs	22
	■ RSA US Thematic Networks	23
SECTION 2	A 260-Year Old Start-up	26
WAYS TO GET INVOLVED	Community & Collaboration	28
	■ Mentorship Program	29
	Organizing Events	30
SECTION 3	Project Support	34
IMPACT OPPORTUNITIES	■ RSA Transform	35
	Coalitions for Change	36
	Student Design Awards	38
	Action & Research Centre	39
	■ Stories of Impact: Future of Work	40
	Stories of Impact: Art of Change	41
	Stories of Impact: People, Power & Places	42
	■ Stories of Impact: Tech & Society	43
SECTION 4	FAQs	46
APPENDIX	RSA US Contacts	48

Our Reach

10 MILLION+ SOCIAL MEDIA IMPRESSIONS

700,000 YOUTUBE SUBSCRIBERS

14 MILLION VIEWS OF RSA SHORTS

500 MILLION MINUTES VIEWED
OF RSA ANIMATE

3.5 MILLION+ VISITS TO OUR WEBSITE
FROM 143 COUNTRIES

330,000 VISITS TO RSA BLOGS

10,000 HITS IN PRINT & BROADCAST MEDIA

31,000 SUBSCRIBERS TO THE RSA PODCAST

100+ EVENTS WITH OVER 10,000 ATTENDEES

30,000 FELLOWS FROM OVER
100 COUNTRIES

PIPELINE TO ALIGNED ORGANIZATIONS,
INCLUDING: WORLD ECONOMIC FORUM,
NEW AMERICA, THE GUARDIAN, BBC,
FINANCIAL TIMES

“When you're finished changing, you're finished.”

BENJAMIN FRANKLIN, FRSA



“The Queen” by Justin Mortimer, 1997.

This official portrait of Queen Elizabeth II was commissioned by the RSA to commemorate 50 years of the Queen's patronage.

Section 1

About the RSA US Fellowship



The first prizes
offered by the Society

MERIT REWARDED

Good Quality Cobalt

The annual cobalt imports were said to be about 300,000 lb. Then considered a drain on the national economy.



It was used in dyes, for adding the colour to enamel, a blue powder mixed with blue that was used in decorating glass and other vessels.

2 Raising & Curing Madder

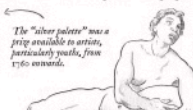
The improvement of methods of dyeing textiles, wool, silk and cotton, and the domestic production of the materials which were then employed.



It was used as a pigment for paint, but mainly used for madder dye and printing, cottons and linens.

Drawing Premiums

For a certain number of boys or girls under the age of seventeen who shall produce the best piece of drawing and show themselves capable when properly examined.



The "silver palette" was a prize available to artists, particularly youths, from 1760 onwards.

Prize drawing by John Smart at the age of eleven



CHARLES LAWRENCE

Inoculation

Lord Macclesfield was not present at the very first meeting at Regent's Coffee House, but he had suggested Shipley in favour of the Society. He ignored, along with those of Folkestone and Regency, but the Society on independent vote of credibility.

Macclesfield was well known for his support of the Foundling Hospital and London's Foundling Hospital - he was, conversely, a supporter of the minority vote practice of inoculation, which was still partially discredited before Jenner's discovery of vaccination, though after then catching on rapidly naturally.

Macclesfield was a model enlightened citizen, using his bishop's pulpit to spread the statistics on inoculation. His support for charitable funds raised up and had extensive wealth, enough of wealth to give money to the poor, to help and to be a benefactor. Macclesfield died in 1790, only a few years after the Society was founded, but he was a supporter of inoculation, which was still partially discredited before Jenner's discovery of vaccination, though after then catching on rapidly naturally.

Queen of the Bluestockings

Montagu was a key member of London's aristocratic and intellectual society. She was known for being "Queen of the Bluestockings" - an informal club of aristocratic women who gathered in each other's houses to enjoy polite and literary conversation at a time when women were excluded from most intellectual discussions.

They permitted female artists, writers and poets. She preferred cultivated discussion and no drinking in salons rather than public meetings, and in fact visited women who tried to engage directly in male-dominated spheres - she preferred to cultivate a female-dominated sphere that was separate.

Blue Plaque Scheme

In 1846, the Society of Arts created a committee for the erection of statues or other memorials to eminent persons associated with the arts, manufactures and commerce. London was growing rapidly, with many old buildings being demolished. They hoped that by offering memorial tablets of famous people in the original buildings they lived in, that it would ensure the buildings were preserved. The first two plaques, offered in 1846 to Lord Byron's birthplace and Napoleon III's residence in London, were blue. But the price was too expensive so for a long time they were blue-plaque houses. The Society of Arts put up 35 in total, with building the scheme over in London County Council in 1905.

The Society's Offices

In 1771, when the Society of Arts failed to negotiate a lease on its old premises, they approached the Alderman brothers. Robert Adam designed the temple-like structure that still houses the Society (since then, the RSA has bought up the rest of the block) - it was to have a Great Room for the meetings, a repository to display the prize-winning machines (near the Benjamin Franklin room on the ground floor), and various other rooms.

Statues on top of the RSA building. Even though they were included in the original Adam specifications, due to lack of funds they were not made and installed until 1991! (The statues were paid for by Sebastian de Brosses, a businessman and former vice president of the RSA, and made by the fine art and restoration company Plenden and Smith.)

Statues

The figure on the left represents manufactures and commerce, a man carrying English bread-cloth to Italy.

The figure in the middle is Minerva, representing arts, holding a shield bearing the Garter's head and a spear.

The figure on the right is Ceres, representing agriculture - she is holding a young oat ear and by her feet is a sheaf for catching wheat.

ARTS AND COMMERCE PRO

It's All Greek To Me

Jesse Stuart was another Scottish architect and pioneer of neoclassicism, just like Robert Adam and William Chambers. He was particularly famous for bringing Ancient Greek influences to British architecture.

Stuart played a major role in drawing and cataloguing Ancient Greek ruins, popularising the designs for the use of other architects, engravers and designers. Stuart joined the Society of Arts in 1760, and was particularly proactive in convincing other members. He proposed the statue of the dictionary Samuel Johnson, the painter Joshua Reynolds, and many other artists. He also presented to the Society descriptions of how to find the ruins, based on his observations while travelling through Greece.

A Kapital Fellow

Karl Marx was a political philosopher, economist and revolutionary socialist.

He and the Society's library, attended its events, and even to have drawn upon its income when writing his main work, Das Kapital.

THE HOUSE OF THE ROYAL SOCIETY FOR THE ENCOURAGEMENT OF ARTS, MANUFACTURES AND COMMERCE
FOUNDED 1754
CHARTERED 1846
ROBERT & JAMES ADAM ARCHITECTS

DAVID WHITEHEAD

DAVID WHITEHEAD

A Think Tank for the 99%

We are a global community of active problem solvers, uniting people and ideas to resolve the challenges of our time.

30,000 FELLOWS AROUND THE WORLD

The RSA US has over 1,000 Fellows, the largest group of Fellows outside the UK. Regional hubs currently include: Anchorage, Boston, Chicago, Los Angeles, NYC, Philadelphia, Pittsburgh, SF/Bay Area, Washington DC.

DEMOCRATICALLY OWNED THINK TANK

65% of our funding comes from Fellowship dues, which allows us to be more immune from external interests. 50% of our board is also elected from the Fellowship, ensuring our governance structures are accountable to our Fellowship.

FELLOWSHIP OF LEADERS

Fellows are united by a commitment to social change and human progress. We are community organizers, “big idea” thinkers and academics, problem-solvers, builders and inventors, expert facilitators, designers, entrepreneurs and industry leaders, policy makers, network builders, impact investors and philanthropists, amongst others.

UNPRECEDENTED BRAINTRUST

We have a deep commitment to research excellence and integrity. The RSA – as a think/do tank – is both a trusted policy shop and helps bring ideas to life by breaking down complexity through executable impact and communication strategies.

WE BUILD BRIDGES

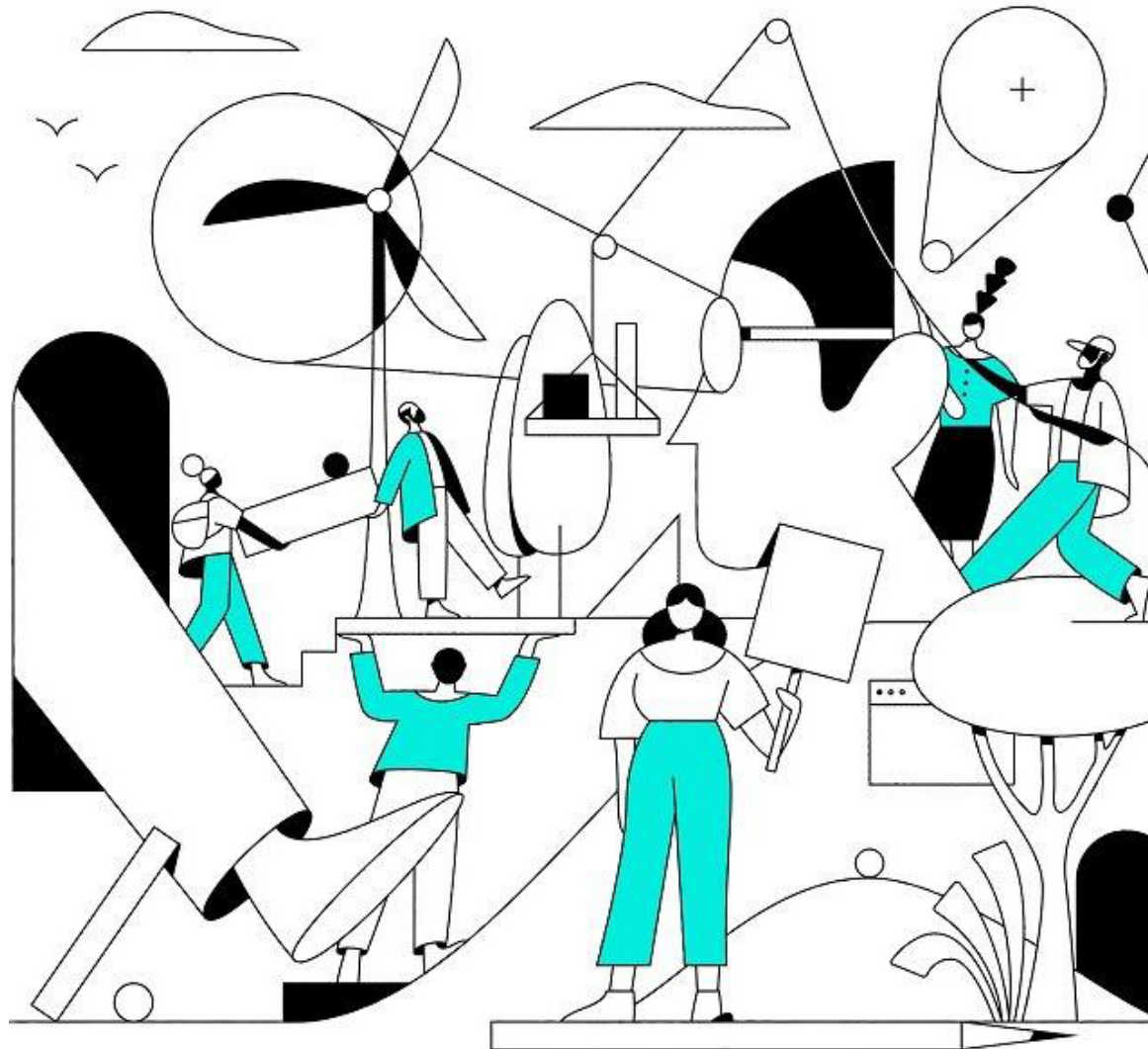
The RSA has unique reach into both ‘grass-top’ and grassroots stakeholders to support the acceleration of innovative policy and systems solutions. We work collaboratively, beyond our institutional walls to mobilize networks for change.

HUMANISTIC SYSTEMS

“Think like a system, act like an entrepreneur” is our guiding philosophy, which applies a design-led approach to complex social challenges. The RSA reflects deeply about the system as a whole, thinking about where our interventions will land, and being ready for when opportunities and energy for change arise.

“Relationships are built at the speed of trust, and social change happens at the speed of relationships.”

REV. JENNIFER BAILEY



The RSA Approach

We believe social change comes about through a choreography of three elements – individual agency, communities of practice, and institutional systems.



For over 250 years the RSA has been at the forefront of social impact. We were founded with a belief in the actions of private citizens to pool their collective will, resources and voice to advocate for public improvement. From our inception, we have been a champion of innovative, practical solutions to the social challenges of the time.

From ensuring education for all by creating the first public exams to promoting the need for conservation and sustainability, from seeking technological solutions to child labour to encouraging the planting of more than 60 million trees – social change is in our DNA.

Change happens through multiple pathways at the intersections and balance of individual agency, collective solidarity and communities of practice, and institutional systems. From the well-established and socially connected to just-getting-going or socially disenfranchised, our community is broad and inclusive. The goal is to identify and support as many ways of affecting and realizing change as possible.

Our reach extends from the grassroots through to policy makers. We welcome activists working to ignite recognition of rising inequality alongside shareholders working on long-term investment strategies that help the planet.

RSA US Ecosystem

The RSA US Staff and Fellowship Services are dedicated to creating opportunities that support Fellows who step into voluntary leadership roles.

CORE STAFF



RSA STAFF

Develop strategies, partnerships, and infrastructure to support Fellows in their work across the US



FELLOWSHIP SERVICES

NETWORK BUILDERS



THEMATIC NETWORK LEADS

Host regular conversations that support a particular topic of interest



COALITION LEADS

Organize Fellows around particular advocacy objectives

VOLUNTARY

3 YEAR TERM



RSA US BOARD

Oversee strategic direction and fiduciary responsibility for RSA US

2 YEAR TERM



FELLOWSHIP COUNCILLORS

Bring strategic perspective from the Fellowship to RSA US Board + Staff

1.5 YEAR TERM



AMBASSADORS

Support Fellowship activities in key RSA hubs across the US

3-6 MONTHS



SYSTEMS EIR

Remote residencies aligned with RSA core program areas

2.5 MONTHS



MENTORS

Offer guidance and support of RSA Fellows around areas of expertise

RSA US Staff



ALEXA CLAY
US DIRECTOR

ALEXA.CLAY@THERSA.ORG

Alexa is passionate about formalizing insights and learning from social change practitioners. She has a love of hermits and Walden Pond, and is based in the Berkshires.

Alexa leads the RSA US – overseeing research, Fellowship, and thought leadership development across key U.S. cities and regions. She is helping to accelerate cross-city and regional collaboration, and grow a distributed network of Fellows for collective impact.

Previously, Alexa led Wisdom Hackers – an incubator for philosophical inquiry – and co-founded the League of Intrapreneurs – a movement to create change from within incumbent systems and big organizations. She also headed research initiatives at Ashoka, working with leading foundations and social impact entrepreneurs to develop learning projects.

Alexa is a leading expert on subculture and innovation from unlikely places. She is the co-author of the Misfit Economy (Simon & Schuster 2015), a book that explores underground and informal innovation. An economic historian and ethnographer by background, Alexa received her BA from Brown University and a MSc. from Oxford University.



ADANNA SHALLOWE
SENIOR GLOBAL MANAGER

GLOBAL@RSA.ORG.UK

Adanna is passionate about adult literacy and inspiring young people to envision a better future. She aspires to be a storyteller who helps drive positive social change around global issues. Adanna is based in London, UK.

Adanna is an accomplished relationship manager with more than 10 years experience in the field of international affairs and development. She is currently the Senior Global Manager and is responsible for harnessing global insights in the RSA's research and for the implementation of its global strategy.

Previously, she led an international skills development program for UK youth. She also represented the UK in two international membership organizations; WorldSkills International and WorldSkills Europe.

Adanna also held research positions on development initiatives for the Government of Trinidad and Tobago and for the UNDP Caribbean Sub Regional Research Facility on their key practice areas on democratic governance, poverty reduction, disaster resilience and HIV/AIDS education and prevention. A graduate of The University of the West Indies at St. Augustine, Adanna studied International Relations and Business Management.

RSA US Staff (continued)



ROBERT DIGGS **COMMUNITY AND PARTNERSHIPS LEAD**

ROBERT.DIGGS@THERSA.ORG

Diggs is currently on the Board of the Better Business Bureau's Wise Giving Alliance – the charitable giving accreditor of the BBB. While Diggs is based in Lancaster, PA, as a native of Brooklyn, NY, he remains a fan of the New York Mets.

Robert Diggs is the Community and Partnerships Lead for RSA US. Diggs is responsible for growing the network and reach of the RSA in the US through partnerships and Fellowship recruitment. He supports opportunities for Fellows to share, learn and connect and works to spot opportunities for serendipity and collective impact.

Previously, Diggs managed operations for the Pennsylvania Consortium for the Liberal Arts, a group of small liberal arts colleges founded in 2014. In this role, he helped translate the collective vision of the member presidents into a coherent strategy that unified the membership.

He received his BA in Government from Franklin & Marshall College and holds a certificate in Nonprofit Executive Leadership from Indiana University-Purdue University Indianapolis.



EMILY CHIAPPINELLI **FELLOWSHIP EXPERIENCE DESIGNER**

EMILY.CHIAPPINELLI@THERSA.ORG

Emily believes the next paradigm for humanity is within reach, and works to encourage regenerative practices from the public and private sector. In her free time, Emily can be found in the forest or practicing archery in the fields. She is based in West Virginia.

Emily works part-time at RSA US designing and supporting Fellowship programs, and deepening the connection mechanisms for the Fellowship community. Her evolving focus is currently on the mentorship program, the city hubs, and the Ambassador program.

Emily's background is in community organizing, impact measurement, and organizational design. She tends to enter into different projects at the start-up phase and helps them to grow into their next level of actualization.

Past projects include helping develop and launch a citywide better business campaign in New York City; building the organizational infrastructure of classical music community platform Groupmuse; and designing impact measurement systems for organizations and entrepreneurs while working for different social impact consulting firms.

Systems Entrepreneur in Residence

The Systems Entrepreneur in Residence (EIR) role is a short-term engagement that supports self-directed projects tied to a core RSA US program. Candidates are vetted for their collaborative leadership and desire to explore a cutting-edge theme, topic or intervention point in their field.

✉ GET IN TOUCH

Contact general.us@thersa.org for more information.



TAYO AKINYEMI
CHICAGO

Tayo is the former Executive Director of AfriLabs, a pan-African network of tech innovation hubs. An entrepreneurship enthusiast, she began her career at an NGO dedicated to advancing women in corporate business.

From developing a community-inclusive business strategy for a greenfield sugarcane ethanol venture in Mozambique, to executing the US entry strategy for a digital marketing company in Brazil, Tayo focuses on helping build sustainable social impact businesses.

INQUIRY

*How do we develop
new forms of
ownership within
the private sector?*



SEAN KLINE
SF BAY AREA

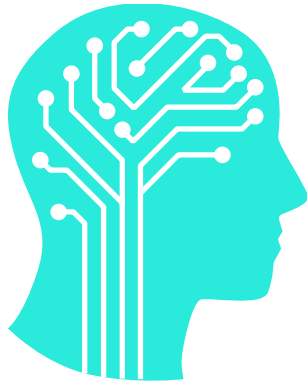
Sean is a mission-driven social innovator focused on financial health and economic security. He recently co-founded The Access Lab, which launched an online tool to help gig and other low-wage contract workers successfully navigate COVID-19 government assistance in the US.

Sean is the former Director of the San Francisco Office of Financial Empowerment, which convenes, innovates and advocates to strengthen economic security for low-income communities and communities of color.

INQUIRY

*How do we
support emerging
economic security
innovations?*

THINK LIKE A SYSTEM



Deep analysis and diagnosis of societal challenges
Interrogate theories of change
Ability to synthesize complexity into frameworks
Operate with steady intention
Envision multitude of future scenarios
Anticipate pushback
Understanding the ecosystem of actors and incentives

ACT LIKE AN ENTREPRENEUR



Build solutions that address societal needs
Interrogate conventional wisdom
Ability to edit complexity into actionable insights
Operate with urgency
Unwavering belief in accomplishing a singular vision
Anticipate risks and failures
Collaborative and opportunistic

The artful blend of “think like a system and act like an entrepreneur”
enables us to work collaboratively with change-makers on some of society’s biggest challenges.

RSA US Board



RIC GREFÉ
BOARD CHAIR, RSA US

Ric has spent decades encouraging thoughtful discussion of policy issues in the civic arena as a journalist, in handling legislative strategy and strategic planning for public broadcasting, and as the CEO of AIGA where he was a longtime advocate for the use of design thinking and creative collaboration for social change. Ric was educated at Dartmouth College and Stanford University and lives in Connecticut. Currently, he is Design Thinker in Residence at Williams College.



PANTHEA LEE
TRUSTEE

Panthea is the co-founder and Executive Director of Reboot. She is passionate about facilitating unlikely but effective collaborations between communities, activists, movements, and institutions to tackle structural inequity – and working with cultural institutions to build momentum for courageous change. Panthea is a pioneer in designing and guiding multi-stakeholder processes to address complex social challenges, with experience doing so in 30+ countries, with partners including UNDP, UN Women, and World Bank.



MOLLY KINDER
TRUSTEE

Molly is a leader in innovation, policy, research, and impact investing. Her research explores an equitable future of work and examines the impact of emerging technologies on low wage workers and women. She is an adjunct professor at Georgetown University, where she teaches the social, economic, and policy implications of artificial intelligence. Molly was a senior advisor and director of research with New America's Work, Workers and Technology program, and is currently a nonresident senior fellow.



CHRIS PADDEN
TREASURER

Chris is the Vice Chair of Whole Education, a partnership of organizations committed to redefining the education system. Whole Education facilitates collaboration between innovative schools; exposes educators to world-class thinking and approaches; and supports effective professional learning. Previously, he was the CEO of the Assessment Foundation, one of the UK's leading non-profit organizations supporting educational improvement.

RSA US Board (continued)



ANTHONY PAINTER **TRUSTEE**

Anthony is the Chief Research & Impact Officer for The RSA, leading the Action and Research Centre (ARC) and its work around the three change aims – creativity, learning and development; economy, enterprise and manufacturing; and public services and communities. His own work focuses on a range of policy issues including the impact of new technology on the economy and society, reform to welfare, work, learning and skills, and reform to public services and a range of public institutions.



JAN PORTILLO **TRUSTEE**

Jan is a highly experienced coach and coach educator who has extensive experience leading significant change and improvement in and across organizations, translating strategy and concepts into implementable models and practice. She has served on a number of Boards, including the International Coach Federation (ICF) and the Association of Coach Training Organisations (ACTO). Jan has been a Fellow of the RSA since 2007, and is a Trustee on the Board of the RSA and the RSA US.



SHAIFALI PURI **TRUSTEE**

Shaifali is the former Executive Director of Global Innovation at NIKE Foundation, where she helped drive innovation across all aspects of the Foundation's work. Before that as the Executive Director of Scientists Without Borders, Shaifali raised millions of dollars to support open-source innovation in the sciences with partners that range from Johnson & Johnson to Pepsico. Her quest is to address some of the world's most pressing challenges – ranging from poverty to gender equality and beyond.

RSA US Regional Hubs

RSA US regional hubs are place-based centers of activity where Fellows can gather in-person to build relationships and share ideas, opportunities, resources and information.

ABOUT AMBASSADORS

Regional hubs are supported by Ambassadors, RSA US Fellows who have taken on a community organizer role. Your regional Ambassador can share more about RSA's presence in your area. They can also help you connect with fellows in your local community, as well as direct you to proper RSA channels.

CURRENT HUBS

ANCHORAGE
BOSTON
CHICAGO
LOS ANGELES
NEW YORK CITY
PHILADELPHIA
PITTSBURGH
SAN FRANCISCO
WASHINGTON DC

 **GET IN TOUCH**

Contact general.us@thersa.org if you want your area represented as a regional hub.

RSA US Thematic Networks

GLOBAL NETWORKS

ARTISTS' NETWORK

HEALTH, CARE & WELLBEING

COACHING NETWORK

INTERNATIONAL DEVELOPMENT

PERFORMING ARTS

INNOVATIVE EDUCATION

SUSTAINABILITY

LGBT CREATIVE CULTURES

SYSTEMS THINKING

Learn more at

<https://www.thersa.org/fellowship/networks>

US Fellows-led thematic networks are self-organized online communication networks that form around one particular theme or topic of interest. Fellows share resources, promote dialogue, and collaborate across regions and sectors to explore ideas which have the potential to become a powerful source of social change.

DELIBERATION GATEWAY

The Deliberation Gateway Network is a first port of call for those curious about deliberative democracy.

NETWORK LEAD

Dr. Chris Forman, FRSA
chris.forman@northwestern.edu

GENDER EQUITY

We explore, support, and promote an intersectional lens towards achieving gender equity for women in society and the workplace.

NETWORK LEAD

Octavia Goredema, MBE, FRSA
octavia@twentytenagency.com

AUGMENTED SOCIETY

We are concerned and excited about the impact technology is having on society and will continue to have in the coming weeks, decades and centuries.

NETWORK LEAD

Zoë Camper, FRSA
zoe@slink.net

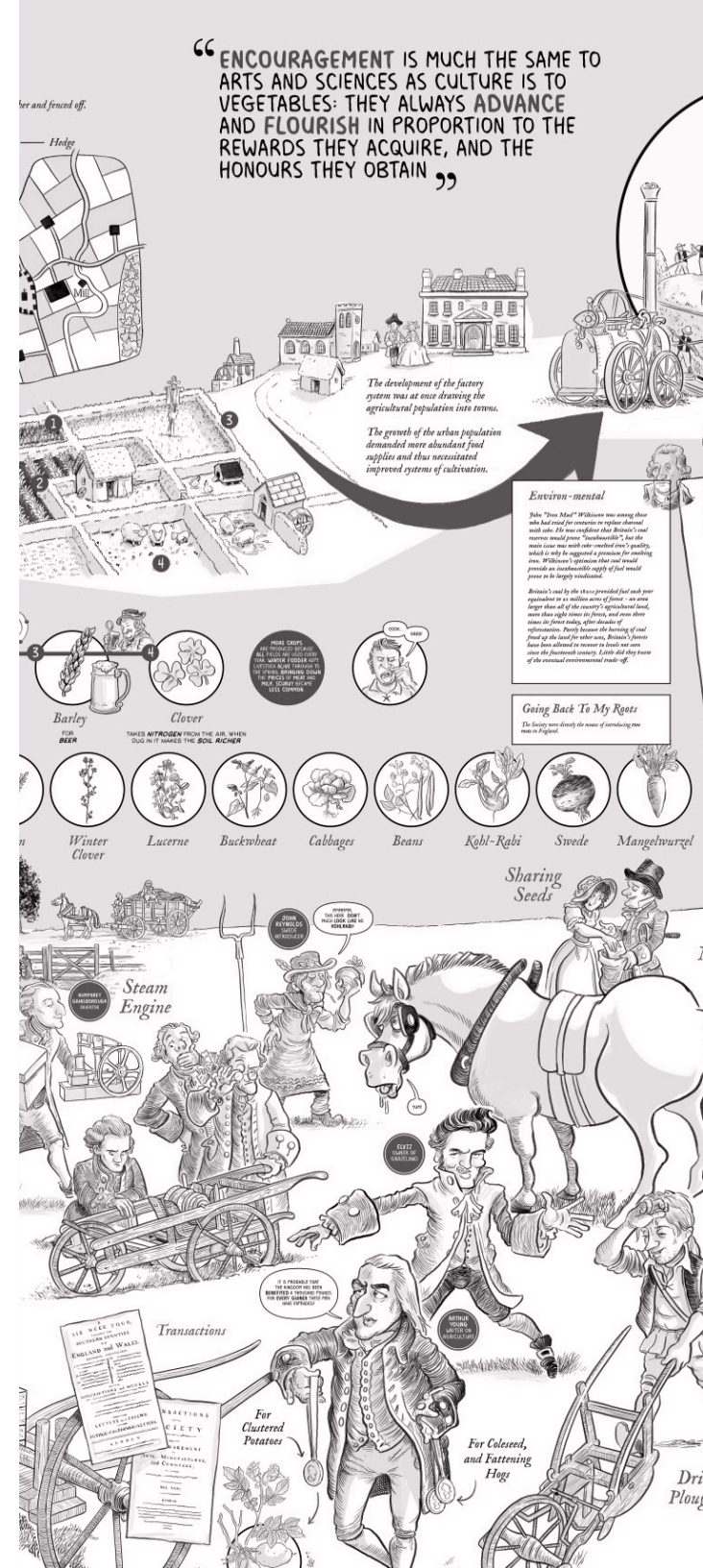
Jonathan Tavss, FRSA
jonathan@kaleidoko.com

 **GET IN TOUCH**

Contact general.us@thersa.org for more info about starting a Thematic Network.

Section 2

Ways to get involved



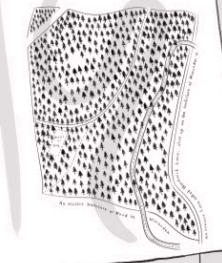


Agriculture

Industry



Town



Planting Trees

Shipbuilding

Sail Cloth

Beef

Milk

Turnip Cutter

Horse Hoe

Draught in Ploughing

Shipworms

Lifeboat

Captain Manby's Mortar

CHOOM!

Chimney Brush

FIYAH!

KA-BOOM!

Lighted Buoy

Safety Carriage

A 260-Year Old Start-up

At the RSA US, Fellows drive our evolution. We strive for continuous improvement towards our goal of activating opportunities for Fellows to harness the fullest potential of the RSA platform.



Fellows are empowered to self-organize towards collective impact, and can help imprint their unique gifts and essence into the RSA through proactive leadership.

This can mean hosting or curating our regular salon series, pioneering applied action and research, contributing to RSA's institutional policies or volunteering as a regional ambassador, sharing your expertise with the network, and supporting and lifting up the work of other Fellows.

Our culture is shaped by each of your contributions. Please feel free to express ideas or feedback to the RSA US team or Ambassadors if you think an aspect of the Fellowship experience could be improved. We are tinkerers and experience designers at heart, and want to shape an RSA that is adaptive to your needs.



As a young NGO leader, I credit a considerable part of my achievement to the RSA. Being a Fellow means having access to a community of thinkers and doers who are committed to positive social change. From town hall events with intellectually intimate discussions to the mentorship program where lasting partnerships are formed, the Fellowship equips me with tools that benefit both my career and personal growth.

Le Dong Hai “DoHa” Nguyen, FRSA



Community & Collaboration

RSA US supports the distributed leadership actions of 1000+ Fellows engaged in social change work across the country and the world. In addition to our regular monthly newsletter, here are some initial ways to find one another.

RESOURCES

MENTORSHIP Pairs Mentees (a Fellow who has specific requests, needs, or advice they are seeking) and Mentors (a Fellow who has specific advice, skills, connections, or experience they would like to offer).

MYRSA Online database of all Fellows within the RSA from around the world. Fellows can be filtered by field, interest area, and country.

SLACK CHANNEL Our most active day-to-day networking tool is the RSA US Slack account. As a new Fellow you can introduce yourself and connect with others in the community and post needs/offers.

TOWN HALL The Town Hall is our bi-annual gathering place for RSA US Staff, Board Members, Ambassadors and Fellows from across the US to get together and forge critical connections.

PEER LEARNING GROUPS

BRAINTRUST Opportunities to convene a field of practice or a system to amplify learning and connections.

CIRCLES Small self-organized groups to share and learn from each other about anything ranging from professional or issue-based interests to personal or life situation overlap. A great way to build relationships and explore potential project collaborations.

COALITIONS Advocacy groups that work to influence policy and practice around particular issue areas.

THEMATIC NETWORKS Self-organized online groups that form around a singular theme or topic.

Mentorship Program

The RSA US Mentorship Program is a match-making mechanism that connects Fellows with particular needs with Fellows who can help them meet those needs. This program is built to connect Fellows in a deep and substantive way, and promotes the sharing of the knowledge, skills, connections, and experiences that Fellows possess.

The mentorship program provides a way to meet the Fellows who up make this incredible network and benefit from sharing in the life experience each person has amassed.

Fellows get matched based on mutual fit, and work together over the course of three months in an intimate and sustained way to meet the needs or goals of the mentee. The relationship between paired Fellows is structured through creating agreements about communication, goal-setting, and expectations. Any Fellow can sign up to be a mentee or mentor, and the time commitment is a minimum of seven hours over the course of three months.

The program offers different benefits to participating Fellows based on the role they assume. Past mentors have remarked at the brilliance of their mentees, and noted that being in a mentor role provided them with exposure to new ideas and a way to share the learnings from their career decisions in a way that clearly benefits another person. Past mentees have described the mentorship they've received as invaluable for navigating career or life transitions and having an "outside person" to soundboard their ideas off of.

Many mentor-mentee pairs have stayed in touch with each other far after the official end of the program. It runs twice a year; one cycle in the spring, and one cycle in the fall.

“

Via the RSA US mentoring program, I have been counseled on the book publishing process by four different RSA Fellows. I'm thrilled to share that I have now received an offer from a publisher to acquire the worldwide rights to my book. Thank you so much for the opportunity and the connections that helped make my book possible. I'm forever thankful.

Octavia Goredema, MBE, FRSA



”

Organizing **Events**

IN-PERSON PROGRAMMING *

SALON

An informal conversation-focused event where same-region Fellows gather for discussion around an established theme or topic. Often includes featured speakers to help deepen the conversation.

WORKSHOPS

An event (virtual or in-person) used to get feedback on a particular idea, project or initiative. We recommend keeping it under 15 people.

SUMMIT OR PANEL

Fellow-led organizing of public facing events used to ignite dialogue, discussion and reflection on the big issues of our time. Often aligned with RSA US's impact opportunity goals, and co-hosted with other partners.

GET IN TOUCH

Contact general.us@thersa.org for help organizing gatherings that invite the broader RSA community to share in explorations of a topic, theme, or project.



RSA US | WASHINGTON DC | SALON RESILIENCE

From global energy, political, climate, military, and financial systems to local communities, cities, movements, organizations, and individual self-care – as we collectively try to grapple with these turbulent times, are there threads that tie together resilience efforts from both the ground up and top down?

Featuring: Lolita Jackson, FRSA (Former RSA US Board Chair and Special Advisor, Climate Policy & Programs, NYC Mayor's Office)



RSA US | NEW YORK | SALON LIFE AFTER INCARCERATION

Talk of the injustice of the criminal justice system is at an all-time high. But what happens once incarcerated individuals are released?

Featuring: Julio Medina, Founder of Exodus Transitional Community; Dominic Dupont, star of the documentary Raised in the System; Coss Marte, Founder of Conbody; Ashish Prashar, FRSA (served time and then had a lengthy career in both UK and US politics, including with the Mayor of London).

Organizing Events (continued)



VIRTUAL PROGRAMMING

VIRTUAL SALON

Informal RSA US Fellow-led virtual events with the aim to create open dialogue and a space to connect across geography over the issues of our times. Often includes featured speakers to help us deepen the conversation. Third Thursday of the month.

SKILLSHARE

Fellows or invited presenters share a concept or skill for folks who are interested in learning about what is being offered. Last Friday of the month.

VIRTUAL COFFEEHOUSE

Inspired by the spirit of debate and dialogue that defines Rawthmell's, the historic coffeehouse of the RSA. Often features a globally recognized industry leader, and open to the broader RSA network.

RSA US | VIRTUAL SALON ART & SPECULATIVE DESIGN

How can art and speculative design – as opposed to the problem-solving of affirmative design – help people understand the complex systems and potential effects of the technologies around us, inspire new ideas, and empower action and change?

Featuring: Pip Mothersill, FRSA (designer and researcher, MIT Media Lab); Floor van de Velde, Professor, School of the Museum for Fine Arts; Sarah Newman, artist and researcher, Harvard's metaLAB.

RSA US | VIRTUAL SALON EXPERIMENTS IN CITIZEN ENGAGEMENT

RSA has been exploring deliberative democracy as an alternative governance framework for complex and sophisticated political systems. Could citizen's deliberations ever play an international role? What factors need to be in place for deliberative democracy to be successful?

Featuring: Chris Forman, FRSA; Deliberative Democracy Consortium; Co-Intelligence Institute; Healthy Democracy.

COVID-19 GUIDELINES

RSA US recognizes the effects of Covid-19 on in-person events. We recommend following all federal, state, local, and common sense guidelines to keep our community safe. Contact us for help translating typically in-person events into virtual ones. Virtual events can allow us to open up outreach to the Fellowship across the US, UK, and affiliate areas.

Impact opportunities



Project Support

From help with funding and valuable feedback from experts, to communications strategies that amplify the reach of your work to leaders and influencers around the world – we can support RSA Fellows at various stages of their projects.

BLOG POSTS Our blog articles feature the latest ideas and thinking from the RSA Action and Research Centre, Fellowship staff, and guest bloggers.

CATALYST GRANT The Catalyst Grant provides support for Fellows' projects at different stages of their development. There are two different grants, our £2,000 Seed Grant and £10,000 Scaling Grant, which we open applications for 3 times a year.

CROWDFUNDING For Fellows organizing their own crowdfunding campaigns, we can cross-promote in our newsletters, provided the project aligns with our mission.

FISCAL SPONSORSHIP In instances where projects need fiscal support, the RSA US has tax-exempt status that supports Fellows' initiatives aligned with our mission.

PROJECT PITCHING Fellows are encouraged to pitch their projects or put out calls to action to the US Fellowship to help them get the contacts and resources they need.

RSA TRANSFORM RSA Transform is an ambitious program supporting projects that have the potential to transform society by mobilizing the RSA's unique resources behind the bold visions of our Fellows. Find out more about the guidelines and criteria.

 **GET IN TOUCH**

Contact general.us@thersa.org for more information.

RSA Transform

PROJECT CRITERIA

- The project lead is an RSA Fellow.
- The project aligns with one of the RSA's key themes and be clearly identifiable as making a change in society outlined in the RSA Charter.
- The project aims to change society in a systemic way.
- There is evidence that the project is highly innovative and targeting a clear social need.
- The project must be established and have proof of concept.
- There is a clear, measurable strategy for sustainability and growth.
- The project has the potential to achieve significant social impact.

RSA Transform is an ambitious program supporting projects that have the potential to transform society by mobilizing the RSA's unique resources behind the bold visions of our Fellows.

EXAMPLE: CITIZEN ASSEMBLIES

The RSA US is currently supporting Of by For, a movement and organization working to erect democratic lotteries as public demonstrations that can overcome our divisive political landscape and create infrastructure for civic conversation. The RSA US is supporting this initiative with an introduction to funders, strategic guidance, connections to advisors/experts, and promotion.

HOW WE CAN HELP

Approved projects will work with a dedicated RSA staff member who helps design and implement a bespoke program of support, including: identifying valuable expertise from within the Fellowship; convening influential stakeholders; or amplifying a message to mobilize people around a call to action.

EXAMPLE: COMMUNITY BANKING

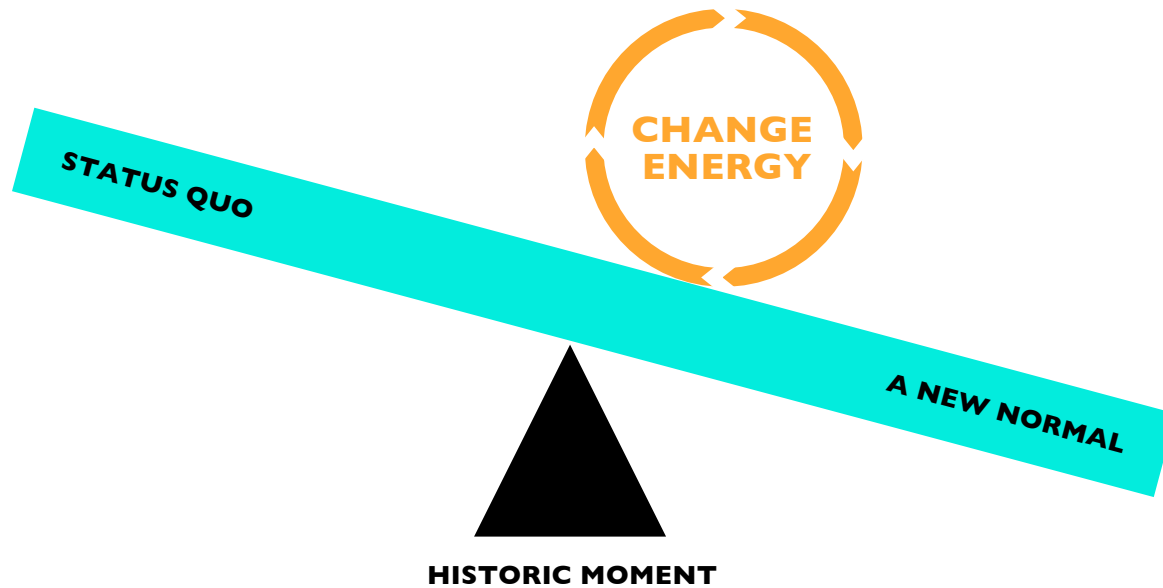
The RSA supported the development of The Community Savings Bank Association (CSBA) to rebuild a network of independent, local banks in the UK. The RSA provided marketing and events support and made introductions through the network to support the early stages of CSBA.

GET IN TOUCH

Contact general.us@thersa.org if you have a project that fits our criteria.

Coalitions for Change

The global pandemic is creating a ripeness for change in social and economic policy in the US. Our coalitions for change unite diverse stakeholders to advocate for emerging policies and practices.



Many of the critical agendas the RSA has been working on for over a decade are now at a 'tipping point' as more radical economic and social policy ideas are being ushered in to support a crisis response to Covid-19. Everything from criminal justice reform, worker voice, inclusive growth, lifelong learning, community design for public services, to universal basic income, have overnight become part of mainstream discourse.

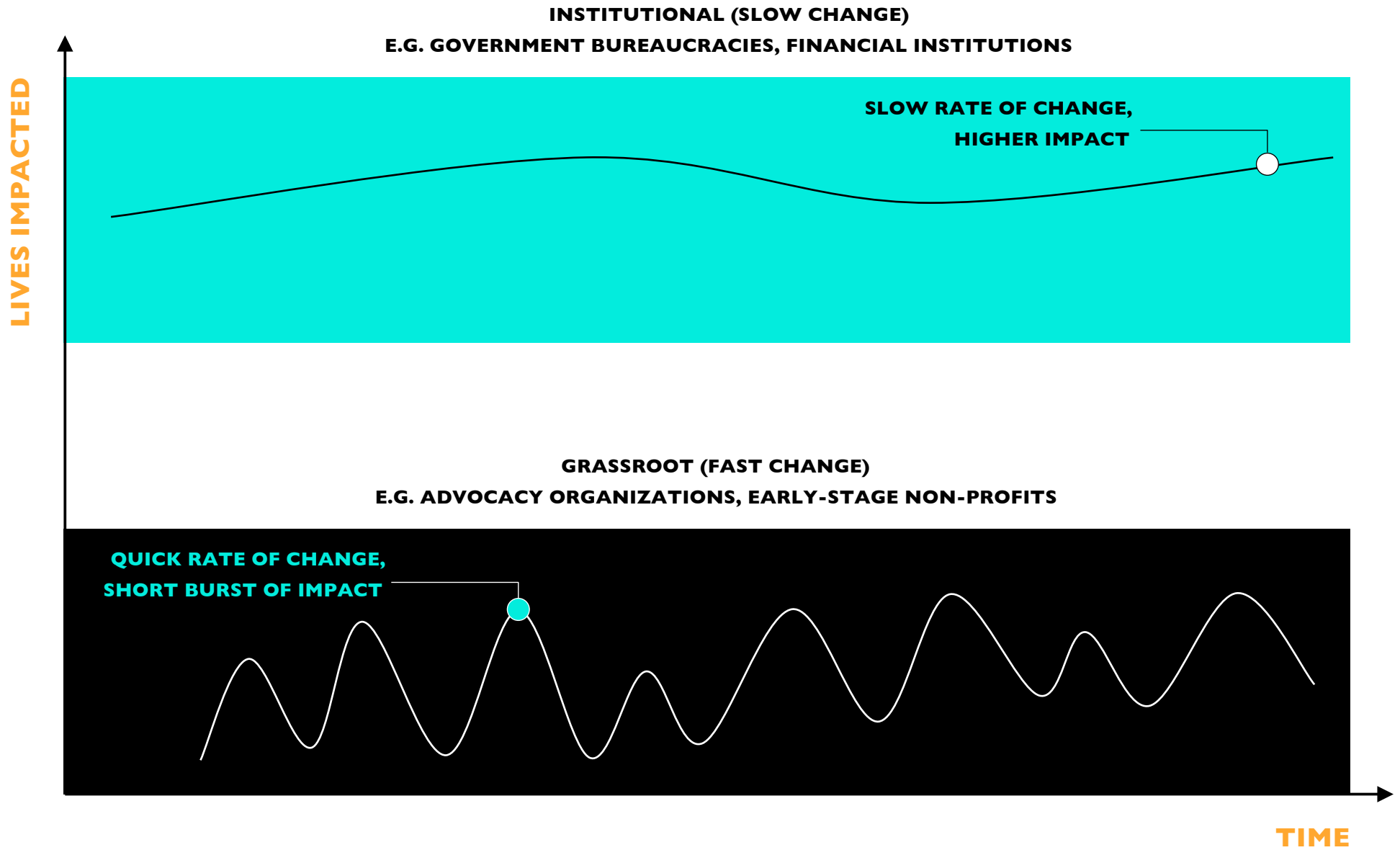
Our challenge is to embed and institutionalize these approaches so they become long-term strategies rather than just part of a short-lived crisis response. We hope to ensure these new adaptations have sticking power in the American social imagination and become part of enlightened policy-making for years to come.

Through our network, the RSA is helping to grow capacity for these emergent policy innovations through curated coalitions of change that engage a variety of social movement actors who collectively can spark enduring action.

 **GET IN TOUCH**

Contact general.us@thersa.org for more information.

HOW CHANGE HAPPENS



Student **Design** Awards

The competition is open to undergraduate and postgraduate students enrolled at any higher education institution, college or university anywhere in the world.



The RSA Student Design Awards is a global curriculum and competition that challenges students to apply their skills and creativity to tackle today's most pressing social and environmental issues. We achieve this by setting project briefs that inspire and challenge students to think differently about the boundaries and purpose of design.

We work closely with industry partners to develop the briefs, ensuring that students are setting their minds to pressing real world problems. And we help colleges, universities and educators embed the briefs into their curricula, supporting participants further with workshops and mentoring.

 **GET IN TOUCH**

Are you a professor, student or design-affiliated professional who would like to get involved? Or are you a corporate sponsor or patron that would like to work with us around specific design briefs? Contact SDAenquiries@rsa.org.uk for more information.

Action & Research Centre

RSA's Action and Research Centre functions as an in-house think tank. It helps provide diagnosis and provocation around some of society's most intractable problems by conducting original research, tracking innovative solutions to societal challenges, and amplifying new ideas & practices.

TECH & SOCIETY

We believe in a human-centric technology sector, guided by a respect for human dignity and ethics. Our Tech and Society program explores how to increase the agency that people have over the way that organizations design and employ emerging technologies. We work with technology companies, public bodies, and civil society to understand the challenges and opportunities posed by future technologies.

PEOPLE, POWER & PLACE

Economic and social policy-making needs a shift in power to people and communities. The focus of our People, Power & Place program is to reduce regional inequalities and foster leadership amongst civil society to bring about more inclusive and fair economies. We support interventions that embed equity and inclusion and that bring social justice considerations into economic development.

LEARNING SOCIETY

We work with local leaders, learning providers, and employers to find untapped sources of community education and transform local lifelong learning. Our program aims to promote a "Learning Society" to widen access to learning for all, prepare young people for work, join up skills and industry, create a workforce ready for a changing world of work, and encourage a sense of place, identity and ambition.

FUTURE OF WORK

The mission of our Future of Work Centre is to ensure everyone can pursue *good work* in an age of technological change. Our principles for good work include: economic security, wellbeing, growth, freedom, and affirming identity.

ART OF CHANGE

Through our network, we pause and put a lens on the art of change-making itself and interrogate our assumptions and common myths around how we make change in society. Through this inquiry, we regularly host conversations and workshops for Fellows and allies around the art and science of change-making.

REGENERATIVE FUTURES

An experimental inquiry to bring together new collaborations that confront environmental degradation and social injustice in tandem. How might we create a system that can respond more effectively to complex challenges we face now and in the future?

Stories of Impact

FUTURE OF WORK SUMMIT IN PARTNERSHIP WITH ENERGY INNOVATION CENTER

RSA US | PITTSBURGH

ACTION & RESEARCH CENTRE: FUTURE OF WORK

RSA US convened 75 experts and practitioners from across the country – leaders working to bring about cultural shifts from within big business, regional economies, local municipalities, and neighborhoods – in Pittsburgh to discuss how to design for shared prosperity in a 21st century economy.

Coalition leadership was provided by Economics of Mutuality, Mars Catalyst, and the League of Intrapreneurs.

ORGANIZING FELLOWS

- Fred Brown, FRSA | President & CEO, Forbes Funds
- Rich DiClaudio, FRSA | President & CEO, Energy Innovation Center Institute
- Grant Ervin, FRSA | Chief Resilience Office, Pittsburgh
- Jabari Jones, FRSA | President, West Philadelphia Corridor Collaborative



Stories of Impact

ART OF CHANGE WORKSHOP IN PARTNERSHIP WITH EATON HOUSE DC

RSA US | WASHINGTON DC

ACTION & RESEARCH CENTRE: ART OF CHANGE

For 250 years, the RSA has stewarded progressive change. Today, with a global footprint of over 30,000 Fellows and countless coalition partners, we want to pause and interrogate how we show up. RSA US brought together grass-top and grassroots leaders across government, community development, technology, philanthropy, education, arts, and more to share perspectives on the mechanics of social changemaking for the 21st century.

Insights from the event have been integrated into RSA Lab's model for social change.

ORGANIZING FELLOWS

- Hosan Lee, FRSA
- Nate Wong, FRSA | Managing Director, Beeck Center



Stories of Impact

INCLUSIVE GROWTH ACCELERATOR IN PARTNERSHIP WITH THE CENTRE FOR PROGRESSIVE POLICY & CODA SOCIETIES

RSA US | CHICAGO

ACTION & RESEARCH CENTRE: PEOPLE, POWER & PLACE



RSA US worked to translate the findings from the RSA's Inclusive Growth Commission into an operational model for the region of Chicago. We helped design a cross-organizational coalition and an accelerator model for the region to pilot concrete strategies for delivering on the vision of inclusive growth.

Coalition leadership was provided by LISC Chicago, World Business Chicago, and CMAP. Funding was provided by the Chicago Community Trust and the MacArthur Foundation.

ORGANIZING FELLOWS

- Kelwin Harris, FRSA
- Meghan Harte, FRSA | Executive Director, LISC Chicago
- Terry Mazany, FRSA | Former Executive Director, Chicago Community Trust

Q READ MORE

www.thersa.org/discover/publications-and-articles/reports/inclusive-growth

Stories of Impact

THE RSA'S FORUM FOR ETHICAL AI IN PARTNERSHIP WITH DEEPMIND TECHNOLOGIES

RSA US | SAN FRANCISCO

ACTION & RESEARCH CENTRE: TECH & SOCIETY



The RSA's Forum for Ethical AI ran a citizens' jury to explore the use of AI in decision-making. We convened participants to grapple with the ethical issues raised by the application of AI under different circumstances and enter into a deliberative dialogue about how private and public sector institutions should respond. Our concluding report presents a toolkit for organizations seeking to deploy their own ethical processes around the proliferation of AI.

AFFILIATED FELLOWS

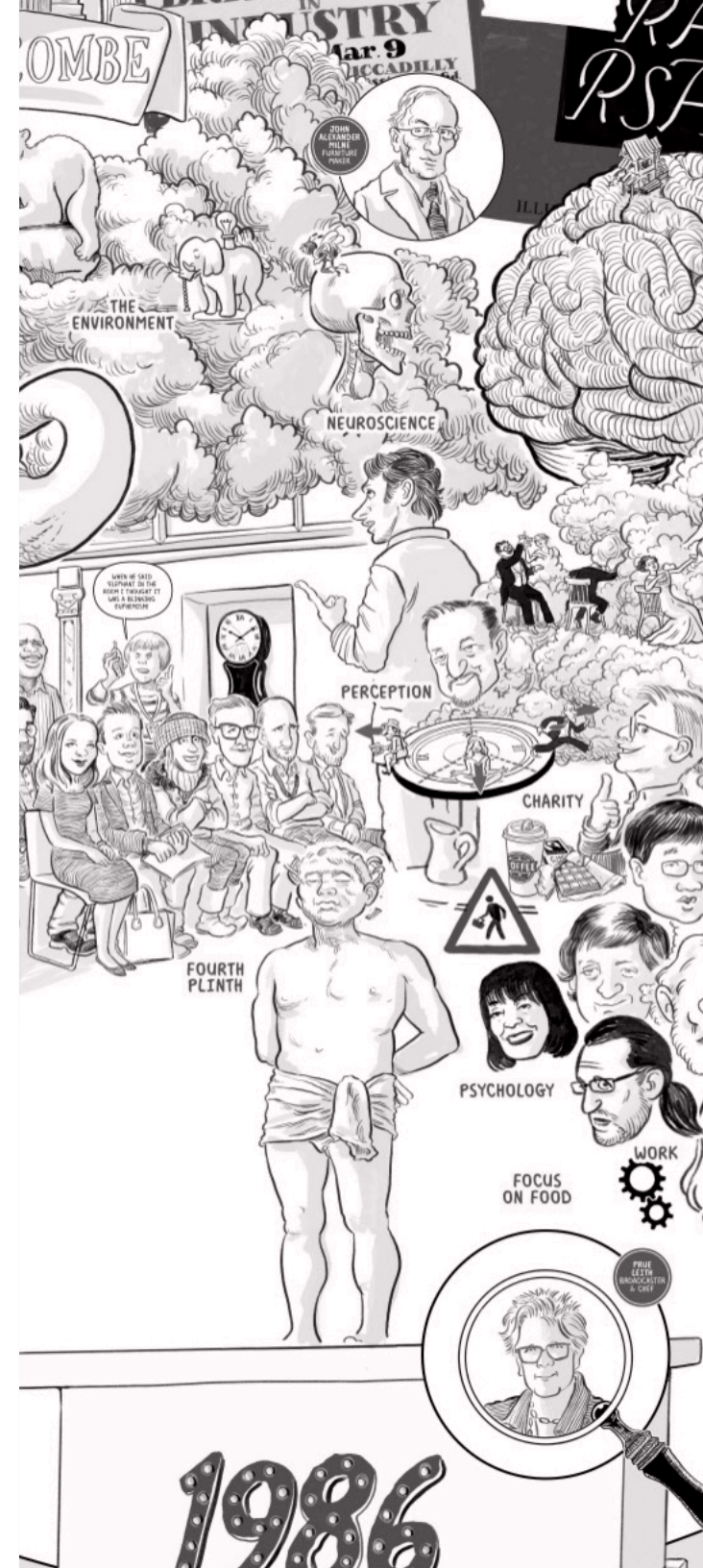
- Zoe Camper, FRSA
- Rumman Chowdhury, FRSA | Global Lead for Responsible AI, Accenture Applied Intelligence
- Jonathan Tavss, FRSA | Co-founder, Kaleidoko

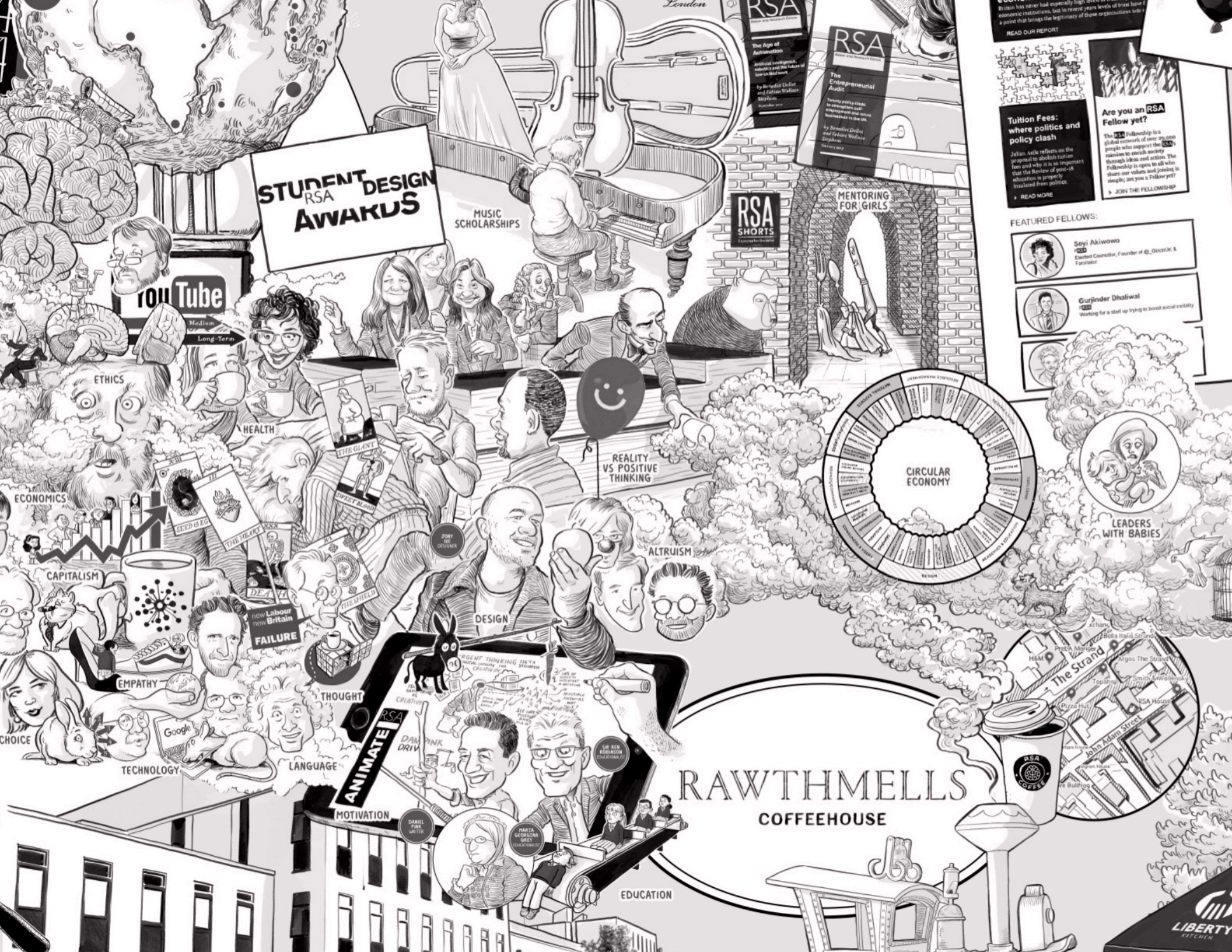
 **READ MORE**

<https://www.thersa.org/action-and-research/rsa-projects/economy-enterprise-manufacturing-folder/tech-and-society/forum-for-ethical-ai>

Appendix

Appendix





STUDENT
RSA
DESIGN
AWARDS

MUSIC
SCHOLARSHIPS

RSA
SHORTS

MENTORING
FOR GIRLS

REALITY
VS POSITIVE
THINKING

CIRCULAR
ECONOMY

LEADERS
WITH BABIES

RAWTHMELLS
COFFEEHOUSE

LIBERTY
KITCHEN

Tuition Fees:
where politics and
policy clash

Julian Asda reflects on the
proposed to abolish tuition
fees and why it is so important
that the Review of post-16
education is properly
insulated from politics.

READ MORE

Are you an RSA
Fellow yet?

The RSA Fellowship is a
global network of over 25,000
people who support the RSA's
mission to enrich society
through ideas and action. The
Fellowship is open to all who
share our values and joining is
simple; are you a Fellow yet?
JOIN THE FELLOWSHIP

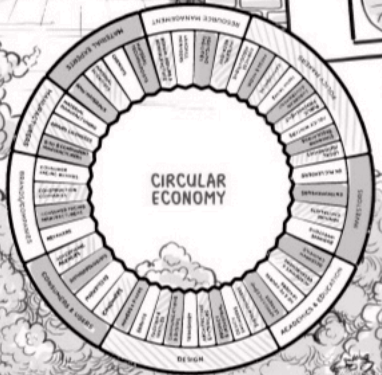
FEATURED FELLOWS:



Seyi Akiwo
Elected Councillor, founder of @BlackUK &
Facilitator



Gurinder Dhallal
Waiting for a start up trying to boost social vitality



DANIEL
PINK
AUTHOR



ANNA
GEORGINA
AUTHOR

EDUCATION

TECHNOLOGY

LANGUAGE

THOUGHT

DESIGN

ALTRUISM

JOY

HEALTH

ETHICS

Long-Term

Medium

YouTube

ECONOMICS

CAPITALISM

CHOICE

EMPATHY

FAILURE

new Labour
New Britain

DEATH

THE TRICKY

THE TRICKY

THE TRICKY

THE TRICKY

THE TRICKY

THE TRICKY

THE TRICKY

THE TRICKY

THE TRICKY

THE TRICKY

THE TRICKY

THE TRICKY

THE TRICKY

THE TRICKY

THE TRICKY

THE TRICKY

THE TRICKY

THE TRICKY

THE TRICKY

THE TRICKY

THE TRICKY

THE TRICKY

THE TRICKY

THE TRICKY

THE TRICKY

THE TRICKY

THE TRICKY

THE TRICKY

THE TRICKY

THE TRICKY

THE TRICKY

FAQs

FINANCIAL TRANSPARENCY

About your Fellowship Dues

Fellowship Dues represent 65% of the RSA income. Your support of the Society allows us to be a more democratic voice for social change, less beholden to external funding interests and more accountable to the public.

Finding RSA US financial data

- RSA US is a 501(c)(3) nonprofit organization that was incorporated in the Commonwealth of Pennsylvania as “Fellows of the RSA in the United States” in 1991. We received tax exempt status in March 1992.
- **Our Guidestar profile:** <https://www.guidestar.org/Profile/7115275>
- **Our IRS Form 990 (via ProPublica):** <https://projects.propublica.org/nonprofits/organizations/232647480>

Funding research/grants

- Our nonprofit status allows RSA US to apply for funding that benefits the Society and the Fellowship, but requires a US organization to be the responsible fiscal agent. This further amplifies the reach of the RSA by leveraging the philanthropic capacity of US based charitable organizations.
- There are opportunities to co-create with corporate and nonprofit fiscal sponsorship. Interested organizations fund a brief that often helps them discover or field test the next “big idea” in their field.

DATA TRANSPARENCY

GDPR

The General Data Protection Regulation is a European Union law that governs the rights to personal data protection for EU and European Economic Area (EEA) citizens. The act also dictates how organizations that collect and/or interact with EU/EEA citizens must handle that data. To ensure compliance, RSA US operates under the guidelines of GDPR.

Third-party technology products used by RSA US

- **Google Suite:** used to share documents and create forms for collecting data
- **Hylo:** used to coordinate collaborations across the RSA Fellowship
- **Microsoft Outlook:** used for RSA’s calendar and email management purposes
- **Salesforce:** used to manage and organize your Fellowship data
- **Slack:** used to allow organic communications across the RSA US Fellowship
- **Zoom:** used to host most of our virtual events
- **Social media:** accounts include Facebook, LinkedIn, Twitter, YouTube

Where different email communications come from

As a Fellow of the RSA, you will be receiving emails from different departments within the RSA. These include general Fellowship newsletters, “global” newsletters that are specific to all non-UK based Fellows, and US newsletters specific to Fellows living in the United States exclusively. The newsletters from RSA US are where we advertise all of our upcoming events, virtual salons, programming, thematic networks, and more. If you are not receiving emails from the RSA US, please contact general.us@thersa.org for assistance.

FAQs (continued)

HOW TO NOMINATE A FELLOW

Do you know someone who would be interested in joining the RSA Fellowship, and plugging into a supportive community of people committed to driving social change, to RSA publishing platforms, grant funding, collaboration and promotion opportunities, all RSA content, events, and mailings? Once Fellows are accepted into the Fellowship, they pay an annual tax-deductible fee each year to continue their membership with the RSA and to support the organization.

Learn more: <https://www.thersa.org/fellowship/join/information-about-applying>

STEP 1: SEND IN YOUR NOMINATION

You can send an email to fellowship@rsa.org.uk with the names and email addresses of your nominees, or you can fill out this short online nomination form at <https://www.thersa.org/fellowship/nominate>. You will need your Fellowship number.

STEP 2: WE INVITE NOMINEES TO SUBMIT AN APPLICATION

A member of the Fellowship Team will send a bespoke invitation with an online fast-track application to your nominees. Through your nomination, they will not need to provide details of referees to support their application.

STEP 3: THEY ARE ELECTED AS FELLOWS

Once your nominees complete the Fellowship application, we will send it forward to our Admissions Panel and elect them to the Fellowship. Once they are confirmed as Fellows, we will send you an email to inform you as well.

LEXICON

DISTRIBUTED LEADERSHIP

The RSA US model of systems change, devolving the actionable steps to “on the ground” practitioners and problem solvers.

FELLOWSHIP COUNCIL

The RSA Fellows that approve new Fellows and provide counsel to the RSA Board.

RSA AGM

The Annual General Meeting held by the RSA typically in October to give an account of emerging strategy and operations to Fellows.

RSA FELLOWS

The people who form our Fellowship. May use post-nominal letters FRSA to signal their part in the Society. Life Fellows are those that make a one-off payment to the RSA to become Fellows for life. It is a discounted rate to annual dues for those that intend to make a long-term commitment to the RSA. If you intend to be a Fellow for more than 5-7 years, a one-time Life Fellowship membership may be right for you.

TOWN HALLS

Bi-annual presentation of RSA US activities to US Fellowship.

TRUSTEE

A member of the RSA and/or RSA US Board - each organization has a separately incorporated board in line with the nonprofit requirements of England, Scotland and Wales (RSA) and the United States (RSA US).

RSA US **Contacts**

MAIN

GENERAL.US@THERSA.ORG

Email us if you are interested in submitting a blog, have an idea for a potential event or thematic network, or want to understand more about how to get value from your Fellowship. We'll also help direct your inquiry to the appropriate departments.

OTHER

FISCAL SPONSORSHIP REQUESTS

alexa.clay@thersa.org

CONNECTING TO GLOBAL FELLOWS

jessica.white@rsa.org.uk

MENTORSHIP PROGRAM

mentorship@thersa.org

BILLING

fellowship@rsa.org.uk

NOMINATE A FELLOW

fellowship@rsa.org.uk

RECEIVE A CATALYST GRANT

catalyst@rsa.org.uk

FIND US ONLINE

RSA US WEBSITE

<https://www.thersa.org/united-states>

FACEBOOK

<https://www.facebook.com/theRSAorg>

TWITTER

<https://twitter.com/thersaorg>

YOUTUBE

<https://www.youtube.com/thersaorg>

LINKEDIN

<https://www.linkedin.com/company/rsa-us>



The RSA in the US offers a valuable chance to connect with a growing network of ideas and leaders. During such challenging times we need institutions like the RSA to be bold and dynamic in finding new ways to address longstanding issues. It has been a honor to serve as a board member, chair the Ben Franklin Medal and – most of all – benefit from the warmth and light of the Fellowship.

*Henry Timms, FRSA
President & CEO, Lincoln Center*



Thank You