



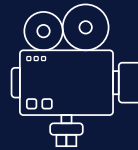
# THE STAGE FOR STORYTELLERS

## *THE SPACE TO CREATE*

---

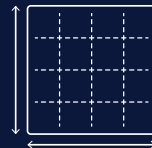
[www.farnboroughinternationalstudios.com](http://www.farnboroughinternationalstudios.com)

# THE SETTING FOR WORLD-CLASS PRODUCTIONS



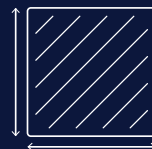
## **4 STAGES**

including two purpose-built,  
22,000 sq ft sound stages



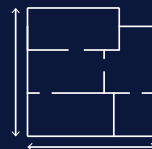
## **210,000 sq ft +**

total stage space



## **1,000,000 sq ft +**

external space for unit, crowd & crew



## **20,000 sq ft**

workshop space



## **3,500**

free onsite parking spaces

## **Plus:**

- Modern production offices and ancillary spaces to suit every production size
- Standing set, driving shoots and onsite location opportunities across site
- Accessible location, 37 miles from central London and 24 miles from London Heathrow Airport
- Adjacent to onsite Farnborough Airport with runway views
- Private and secure site with private roads, dedicated Wi-Fi, water and catering services
- Dedicated Destination Zero sustainability charter and commitment to Albert and Green Production initiatives
- Numerous nearby shooting locations, accommodation and local amenities
- Experienced team and personable, boutique service

**FARNBOROUGH**  
INTERNATIONAL  
STUDIOS





**IF**

Farnborough International Studios is a leading film location within the South-East of England, offering state-of-the-art filming facilities for the creative industries.

Our two 22,000sqft sound stages have been designed to meet the needs and provide better creative spaces for production companies and content makers. The studios sit within a world-class events space that offers extensive exhibition space and locations that can augment your shoot.

Our studios have been created by industry professionals who understand the demands of film and high-end TV production, providing professional facilities and solutions for filming and productions worldwide.

We operate an intimate studio structure and focus on providing an exclusive, personable experience. We understand the demands of a production, and our expert team are equipped to respond quickly to provide the operational and service support you need.

# STATE-OF-THE-ART STUDIO FACILITIES







# SUPPORTING SUSTAINABLE AND ACCESSIBLE PRODUCTIONS

Destination Zero is our commitment to becoming a leading sustainable business and film studios. We're proud to be featured in the albert Suppliers Directory, highlighting our commitment to sustainability and driving positive change in the TV and film industry.

Through our various sustainability initiatives, we support productions in all elements of enhancing their sustainable operations and strengthening productions Albert and Green Productions applications. These include:

## SUSTAINABLE & ACCESSIBLE PARTNERSHIPS

- We offer a list of suppliers and crew that are locally based to support their production and limit travel and carbon emissions.
- We partner with albert suppliers for power, waste and stage supplies and support productions with green alternatives on site.
- We offer an accessible site, are part of the Television Access Project and have three TAP activators as part of the team that champion accessibility for all.

## POWERED BY RENEWABLE ENERGY

- We generate over 30% of our site's annual electricity needs through solar energy.
- LED lighting is used across our stages and motion sensor lighting in our production offices to limit energy overuse in production offices.
- All energy on site is 100% sourced from renewable sources.
- We actively support on grid Unit bases to limit generator use.
- We have onsite EV charging points.

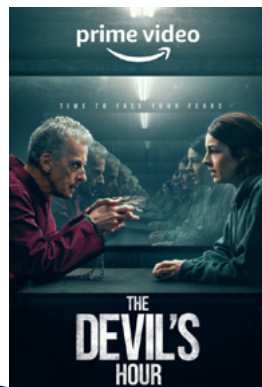
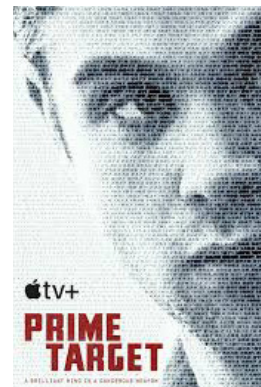
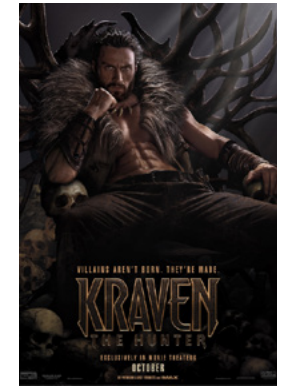
## ZERO WASTE TO LANDFILL

- We send zero waste to landfill onsite, recycling 98% and recovering the remaining as energy.
- 100% of our disposable food packaging is either recyclable, biodegradable or compostable.
- We ensure supporting policies and sustainable initiatives for set, food and prop recycling.

DESTINATION  
**ZERO**







CREDITS

amazonstudios

BBC

COLUMBIA  
PICTURES 

Disney

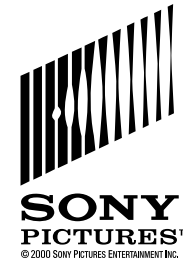
EON  
PRODUCTIONS



HBO



NETFLIX



WHO WE HAVE  
WORKED WITH



# STUDIO FACILITIES

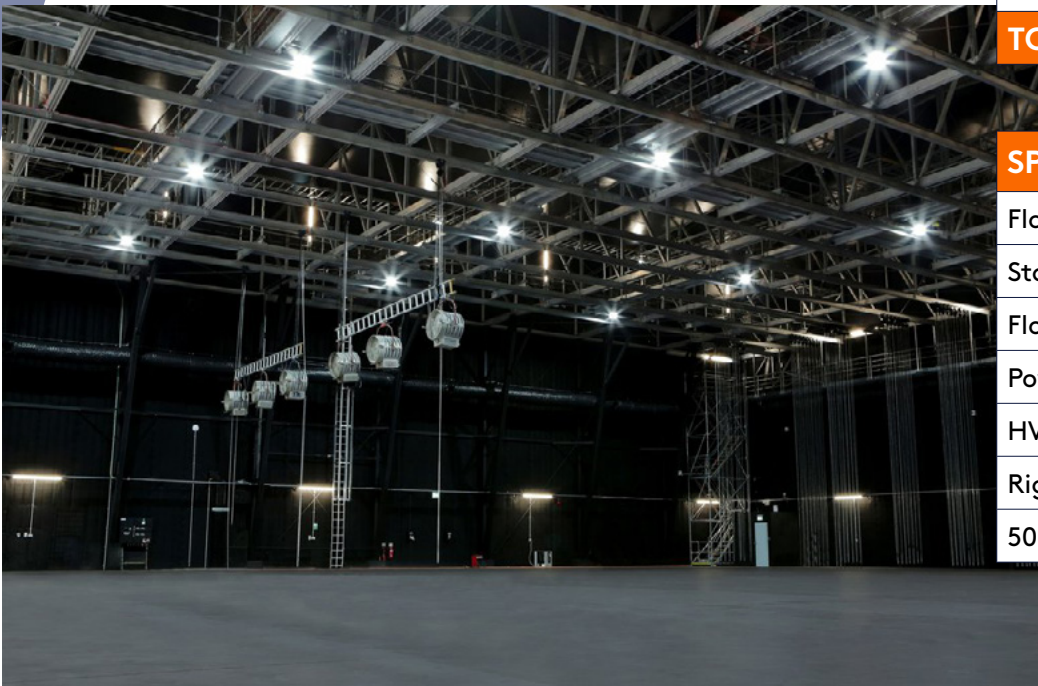
## *SOUND STAGES*

### STAGES

FACILITY	SQ M	SQ FT
Stage 1	2,000	21,527
Stage 2	2,000	21,527
<b>TOTAL</b>	<b>4,000</b>	<b>43,054</b>

### SPECIFICATION

Floor to beam working height 11.5m/37.7ft
Stage door 4.8m x 6.5m/15.7ft x 21.3ft
Floor loading built to withstand multiple plant activities
Power capacity 20,000 sq ft = 1600 KVA
HVAC powerful ventilation and AC industrial grade ATMOS system
Rigging weight 500kg per 5m x 2.5m/16.4ft x 8.2ft grid
50dB sound reduction as standard





# ADDITIONAL SUPPORTING ON-SITE LOCATIONS

Farnborough International Studios is located within a world-class events space and can support your production with additional larger spaces and car parks for unit bases with access to power and water supply.



## **HALL 1**

132,740 SQ FT  
PILLARLESS SPACE



## **UNIT BASE**

1,076,391 SQ FT  
EXTERNAL SPACE



## **HALL 5**

33,906 SQ FT  
PILLARLESS SPACE





# PRODUCTION OFFICE SHOWCENTRE



## SPECIFICATION

Net2 access control security

Fast internet capabilities

Air-conditioned

Furnished

Open plan offices

Kitchen

Toilets



# PRODUCTION OFFICE CHALETs

## CHALET OFFICES

FACILITY	SQ M	SQ FT
Chalet Office 1	188	2,023
Chalet Office 2	189	2,024
Chalet Office 3	189	2,024
Chalet Office 4	188	2,023
Chalet Office 5	188	2,023
<b>TOTAL</b>	<b>942</b>	<b>10,117</b>

## SPECIFICATION

Net2 access control security

Fast internet capabilities

Air-conditioned

Furnished

Open plan offices

Kitchen

Toilets



WORKSHOPS		
FACILITY	SQ M	SQ FT
Workshop 1	2,000	21,527
Workshop 2	2,000	21,527
Workshop 3		
Workshop 4		
<b>TOTAL</b>	<b>4,000</b>	<b>43,054</b>

SPECIFICATION
Floor to eaves working height 7.07m/23.20ft
Roller door 5m/16.5ft wide 3m/9.10ft high
Power Capacity 3 phase power
Heating



WORKSHOPS

# STUDIOS LOCATION & NEARBY LOCATIONS



Farnborough International Studios is well positioned for some of the most popular shooting locations near London.

The studios site is located southwest of London just off the M3, 35 minutes from central London by train, and 30 minutes from Heathrow Airport.

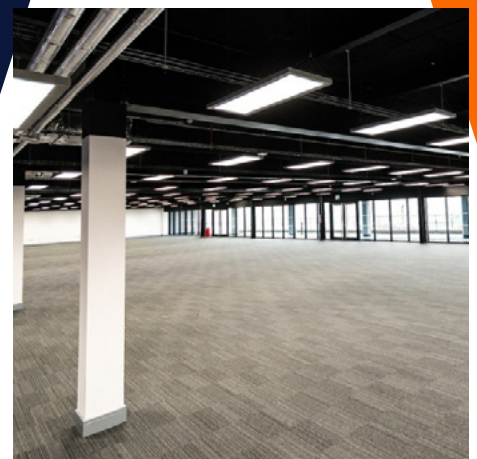
Numerous additional filming locations are within a 15-mile radius of the studios and present diverse and adaptable options for period and contemporary properties, as well as build spaces and doubles for overseas locations.

The locations listed have been used in features such as Marvel's Avengers, The Gladiator, World War Z, Black Widow, The Kingsman and many more.



# 12 LOCATION FILMING ACROSS WIDER SITE

Farnborough International's locations have been used in many film and television programs and we are open to supporting various location shoots. From car chases to airport lobbies, Farnborough International Studios will work with you to create the shoot you want.







**ADDITIONAL  
NEARBY LOCATIONS**



# NEAR THE LOT

Farnborough International Studios offers fantastic nearby amenities, from high-end to more budget friendly options. Many amenities also have crew discounts- just ask the team!

## HOTELS

- The Aviator (5 \*)
- The Village
- Holiday Inn

## CAFÉ'S

- Elevenes
- The Teashop Around the Corner
- Rushmoor Café
- The Aviator's Café

## RESTAURANTS

- Malacca
- Colosseo
- The Swan
- The Brasserie (Inside Aviator)

## BAR'S

- Aviator Sky Bar
- The Swan

## GYMS

- The Village gym
- Babylon Fitness Studio



“Great experience overall. Excellent enthusiastic and responsive support.”

**DIRECTOR, ZOYA FILMS**

“I'd like to say a big thank you to your team at the studio for being so helpful. The security team were all very polite and helpful and also Lewis who I met in the morning was very thorough with explaining the site and how to get around it. They are a credit to you.”

**GUY EASTHAM – ASSISTANT UNIT  
MANAGER, CITADEL 52**

“Farnborough International is a ready-made unit base providing space for 28-trailers, caterers, crew parking for over 200 cars AND power from the grid plus water on site. Highly recommended and Rachel and the team are friendly and easy to work with.”

**VAUGHAN KING – UNIT MANAGER,  
ICEBREAKER**

“Your team made filming in Hall 5 a total pleasure. Both your operations & security teams were incredibly understanding & helpful in finding solutions and making everything work. It's personally one of my favourite places to shoot and I look forward to hopefully returning soon!”

**SAM MILLNER, MARENGO**

“We searched for 2 weeks for some temporary space. I called the office and Rachel called me back in 15 mins, 30 mins later I was being shown around and on Monday the deal was done. We moved in on Thursday! Excellent service.”

**DAVID MEARNS – MANAGING  
DIRECTOR, SIGNMODE**

“Farnborough International were so welcoming and helpful to our production. Available at all hours of the day, they went above and beyond to accommodate us.”

**VICKI WILSON, LOCATION  
MANAGER, CITADEL**

“I just really wanted to say an enormous thank you to you both for our visit earlier in the year. It was a great success and, having seen a rough cut of the first episode, I can tell the series is going to be amazing!”

**NICK MARSHALL, CBS UK  
PRODUCTIONS LTD**

# TESTIMONIALS





# CONTACT US TO SEE HOW WE CAN SUPPORT YOUR ***NEXT PRODUCTION***

---

## **Rachel Morrison**

Studio Director, Farnborough International

**E:** [Rachel.Morrison@Farnborough.com](mailto:Rachel.Morrison@Farnborough.com)

**T:** +44 1252410970

**M:** +44 7743957714

[www.farnboroughinternationalstudios.com](http://www.farnboroughinternationalstudios.com)