



RSA
HOUSE





A home for ideas since 1774.
13 spaces, one unforgettable
experience.

WELCOME TO RSA HOUSE

Exceptional hospitality in the heart of London

Step inside RSA House, home of the royal society for arts, manufacturers and commerce, to discover a hidden gem just moments from the Strand. Behind our elegant Georgian façade lies a curated collection of 13 versatile event spaces, rich in character and history.

From candlelit dinners under lofty ceilings to creative brainstorming in light-filled rooms, every moment here is made memorable by warm service, exceptional food and a story you'll be proud to be part of. Each room at RSA House has its own distinct personality, from grand and uplifting to intimate and atmospheric. Whether you're hosting a wedding, product launch, board meeting or celebration, our expert team delivers thoughtful service, fine seasonal food, and a seamless experience from start to finish.

Heritage and innovation surround you, but it's the welcoming atmosphere and attention to detail that make people return time and again.



Seasonal menus with sustainably sourced ingredients, crafted in our kitchen.

FOOD, DRINK & SERVICE

Fresh, flavourful and sustainably sourced...

We're committed to serving great food, drink and service that leaves a positive, lasting impact on people, places and the planet.

Every menu at RSA House is crafted with care. The focus is on handcrafted food made with ingredients from trusted artisan suppliers, while supporting local communities and reducing our environmental impact.

We proudly serve the best of British produce: no air-freighted fruit or veg, only MCS-certified fish, and all meat and cheese sourced from within the UK. As a business, we aim to reach net zero by 2040.

Our food is fresh, flavourful and sustainably sourced. From elegant, seated dinners to creative canapés, we champion local, seasonal and ethically sourced

ingredients. Whether you're planning a breakfast meeting or a gala banquet, expect food that's full of personality and purpose.

Our drinks offering is as versatile as our spaces, from barista-made coffee and artisanal teas to celebratory cocktails, biodynamic wines and a variety of non-alcoholic options. We work with artisanal suppliers to deliver drinks with integrity, creativity and flair; whether it's a morning welcome or a late-night toast.



FOOD, DRINK & SERVICE



Impeccable,
intuitive and
creative service
from start to
finish.



Great hospitality is about more than food and drink; it is about how people feel. Our experienced front-of-house and event teams pride themselves on warm, seamless service, ensuring every guest feels welcome, looked after and genuinely cared for, whatever the occasion. From the first greeting to the final farewell, we create an atmosphere where guests can relax and enjoy every moment. This standard of service has been recognised by the London Venue & Catering Awards with multiple accolades, including Best Wedding Venue and Best Customer Service.

Our chefs bring creativity, skill and passion to every plate, working with a carefully curated larder of seasonal British produce from trusted artisan

suppliers. Menus are designed to be both beautiful and memorable, with a focus on flavour, sustainability and presentation. Whether it is a refined three-course dinner or an inventive canapé reception, every dish is crafted to reflect the same attention to detail that defines our service.

We invest in our people, nurture their talent and encourage individuality, because we know exceptional hospitality comes from teams who feel valued and inspired. This shared pride and dedication from the kitchen to the front of house transforms events at RSA House into experiences guests remember long after they leave.

A celebration of London’s finest independent producers...

At RSA House, every plate, drink and experience tells a story.

Our London Larder programme champions local artisan suppliers – from Cobble Lane’s British charcuterie to Paxton & Whitfield’s award-winning cheeses – each chosen for quality, provenance and their shared commitment to sustainability. By sourcing locally, we reduce our carbon footprint, support the regional economy and bring guests closer to the people and processes behind their food. Through regular pop-up tastings and supplier events, we create opportunities for engagement, storytelling and a deeper appreciation of British craftsmanship.

SUPPLIERS

- 1

Dalston Juice
B-CORP
- 2

Dash Water
B-CORP
- 3

Dormen Foods
Diverse Ownership
- 4

Flawsome Drinks
B-CORP
- 5

Freshways Dairy
Diverse Ownership
- 6

La Latteria
Diverse Ownership
- 7

Luminary Bakery
VCSE*
- 8

Hope & Glory
Diverse Ownership
- 9

Rubies in the Rubble
B-CORP / Diverse Ownership
- 10

Union Coffee
B-CORP / Diverse Ownership
- 11

Vegetarian Express
B-CORP
- 12

Well Grounded
Diverse Ownership / VCSE*
- 13

Ridgeview Wine
B-CORP
- 14

Paul Rhodes Bakery
- 15

Cobble Lane Cured
- 16

The Wild Room
- 17

Paxton & Whitfield
- 18

Sally Clarke Bakery
- 19

Belazu
- 20

Ellis Wines
- 21

H. Forman & Son
- 22

HG Walter
- 23

The London Honey Company
- 24

Marrfish
- 25

London Borough of Jam
- 26

Brindisa
- 27

Solstice
- 28

Wild Harvest
- 29

Celtic Bakers
- 30

Hackney Gelato
- 31

Truffle Guys
- 32

Two Tribes



VCSE* – Voluntary, Community or Social Enterprise Organisation



ENVIRONMENTAL & SOCIAL CHANGE

Every event supports a mission for good...

At RSA House, we take a considered approach to every stage of our operations.

All our eggs are cage-free, our fish is responsibly sourced in line with Marine Conservation Society standards, and our coffee is sourced via Union Direct Trade, ensuring fair labour practices and sustainable farming. Single-use plastics have been eliminated from service, compostable alternatives are used where disposables are necessary, and deliveries

are consolidated to three days a week to reduce emissions. Our kitchens are gas-free, powered by induction, and equipped with the most energy-efficient technology available. Partnerships like Too Good To Go help us minimise food waste, with surplus produce repurposed or sold at a discount to the community.

Our social impact extends far beyond sustainability. Through our partnership with Well Grounded, we provide training, work placements and employment for individuals facing barriers to work, supported by our 10p-per-coffee donation initiative in The Coffee House. Throughout the house, we offer a programme of arts-driven events that give a platform to diverse voices.

The Coffee House's free meeting spaces welcome over a thousand community guests each year, while our doors remain open to all, offering free Wi-Fi, seating and facilities. From the drinks at MUSE – created with wild, foraged and locally sourced ingredients – to the hand-selected art on our walls, our hospitality is built on purpose.

For every pound spent at RSA House,
around one third goes towards supporting
the RSA's charitable works.



The overarching design for the Society, as set out by founder William Shipley, was for members to pool their subscription funds and to spend them on initiatives for the public good. We welcomed women members from the very beginning, unlike many similar institutions.



The mission of the Society was to improve the lives of the poor and to provide a place where they could meet and discuss their concerns.



THE COFFEE HOUSE

Where ideas percolate – eat, meet and create...

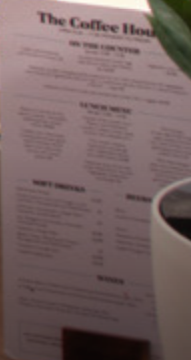
The heart of RSA House's social energy, The Coffee House is a relaxed and versatile space for informal meetings, solo work, or casual catch-ups.

WELL GROUNDED TRAINEESHIP

GERARD ROOM

OUR MISSION IS TO EXAMINE PEOPLE, PLACES AND THINGS TO FLOURISH IN HARMONY

WE WERE INSTRUMENTAL REPLACING CHILD CHIMNEYS WITH MACHINES.



THE COFFEE HOUSE



Historic coffeehouse roots.
Modern creative energy.



Inspired by the Enlightenment coffeehouse culture that gave birth to the RSA in 1754, it continues to be a place where ideas are exchanged, connections are made and creativity thrives.

Today, The Coffee House is as much about inspiration as it is about conversation. Guests can explore the adjoining RSA Library, home to an extraordinary collection of books and archives spanning centuries of thought and innovation. From historic publications to contemporary works, it's a space that invites curiosity and sparks dialogue.

With flexible seating, food and drink served throughout the day, and a bookable mini amphitheatre known as The Steps, The Coffee House naturally brings people together.

It's a place where business and culture meet, hosting everything from networking events to live music, workshops and community gatherings; continuing the tradition of a meeting place for ideas and community in the heart of London.



GREAT ROOM

Where great minds have always gathered...

Awe-inspiring and deeply atmospheric, the Great Room has been a nerve centre of ideas at the RSA for more than 250 years.

GREAT ROOM



The walls are adorned with
'The Progress of Human Knowledge
and Culture', a monumental six-part
mural by Irish artist Sir James Barry.
(1777-1801)




Beneath its soaring ceiling and monumental paintings by James Barry, generations of thinkers, innovators and changemakers have gathered here to share ideas that shaped the world. From the first UK demonstration of the telephone to landmark debates and celebrations, it remains a space where history and progress meet.

Today, the Great Room continues to inspire. Its grandeur makes it a spectacular backdrop for conferences, awards ceremonies, wedding receptions and gala dinners, while its rich history adds a sense of significance to every occasion. The scale of the

room, combined with its timeless elegance, creates an atmosphere where guests feel they are part of something truly momentous.

More than just a venue, the Great Room is a stage for new ideas, memorable celebrations and meaningful connections, a place where every gathering becomes part of a story still being written.



MUSE AT RSA HOUSE

Ring the doorbell for entry...

A cocktail bar with soul. Sustainable, sophisticated, and quietly decadent. Open to all, Muse at RSA House, is the perfect place to enjoy a stimulating post-work drink.





“Muse is not your average brass-and-marble speakeasy. Just off The Strand, it’s like stumbling into an elegant little laboratory dedicated to turning small-batch and sustainably sourced British spirits into memorable (and reasonably priced) cocktails...”

★ ★ ★ ★

PHIL DE SEMLYEN
GLOBAL FILM EDITOR, TIME OUT

MUSE

Tucked behind a discreet street-level door, Muse is a hidden gem. This intimate cocktail bar celebrates British ingredients, wild foraging and sustainable innovation, all delivered with a sense of fun and flair.

Settle into our warm, refined space – perfect for a pre-theatre or post-work cocktail that carries effortlessly into the evening, complemented by our crafted bar snacks and small plates menu.

Whether you’re toasting the end of a successful event or enjoying a spontaneous evening drink, Muse blends Georgian charm with contemporary spirit.



Benjamin
Franklin
Room

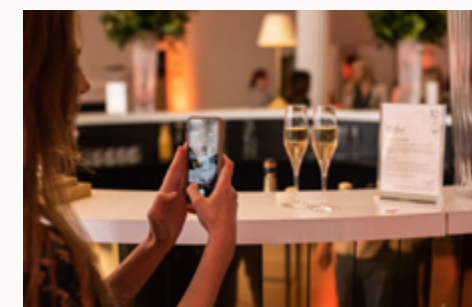
BENJAMIN FRANKLIN ROOM

Georgian elegance, reimagined...

With tall sash windows, original fireplaces and a striking crystal chandelier; the Benjamin Franklin Room blends classical Georgian beauty with contemporary style.

BENJAMIN FRANKLIN ROOM

The room's dramatic chandelier, by London-based artists, Troika, was inspired by the bifocals Benjamin Franklin invented.



Bathed in natural light by day and glowing with a warm, inviting ambience by night, it's a space that adapts effortlessly to the occasion.

Equally suited to elegant drinks receptions, impactful conferences and romantic wedding ceremonies, the room offers a versatile backdrop that combines style with substance. Its proportions make it ideal for

focused presentations or intimate gatherings, while its charm ensures every event feels special.

Whether you're exchanging vows, hosting delegates or bringing guests together before a larger celebration in the Great Room above, the Benjamin Franklin Room creates an atmosphere where conversations flow, ideas flourish and memories are made.



DESIGN STUDIO

Fresh thinking, vibrant energy...

Designed for innovative, free-thinking and creative collaboration and purpose-built for brainstorming, the Design Studio is a dynamic, design-led space – a contemporary creative hub.

With height-adjustable desks, whiteboard table and wall surface, versatile furniture and bespoke mural, it's ideal for innovation workshops, project sprints and team meetings. Available for short- or long-term hire, this inspiring space is alive with greenery, colour and natural light.

DURHAM STREET ENTRANCE

Ideal for private events and film shoots...

The discreet and self-contained Durham Street Entrance offers direct, step-free access into the Vaults and Durham Street Auditorium, making it a practical and private option for larger conferences, exhibitions, weddings and filming.

Once a public thoroughfare and now part of RSA House, this Grade I listed stretch of road retains its original flagstones and historic character, offering a unique arrival experience. Its independent street access makes it ideal for production crews, VIP arrivals or exclusive evening hire without using the main reception.

Durham Street Entrance is regularly used for private events, branding opportunities and for events needing increased privacy or technical setup time outside of main building hours.



Originally a public street, now a private entrance, with original flagstones still underfoot.

A photograph of a vaulted brick cellar. The ceiling and walls are made of aged, textured brick. The floor is dark wood. In the center, there is a bar area with a neon sign that says "Let's Party" in blue. The space is lit with warm, ambient lighting and track lighting. There are arched doorways on the sides and a large arched window on the right.

VAULTS

London's most unexpected party space...

Hidden beneath RSA House lies a dramatic network of vaulted brick cellars, once used to store wine transported via the Thames.

VAULTS



Steeped in history yet brimming with character, these spaces offer an unmistakable sense of atmosphere that instantly sets the tone for any event.

Today, the Vaults host everything from fashion shows and product launches to wedding receptions and private parties. They also provide an ever-changing backdrop for art exhibitions, showcasing work from partner artists and RSA Fellows throughout the year. Their exposed brick walls, curved ceilings and moody lighting create a distinctive industrial edge, while built-

in sound systems, flexible layouts and private street-level entrances make them as practical as they are striking.

Whether you're planning a lively drinks reception, a creative brand showcase, an immersive exhibition or a late-night celebration, the Vaults deliver a setting that feels both exclusive and unforgettable; a hidden event space beneath the city, ready to make a lasting impression.

Historically used to store wine transported directly via the River Thames before it was embanked as we know it today.





A theatre built on a hidden
and preserved cobbled London
road from the 1700's.



DURHAM STREET AUDITORIUM

Immersive, cinematic, unforgettable...

Purpose-built for screenings and presentations, this quirky, historic 70-seat space is set beneath dramatic vaulted ceilings and Victorian stone setts.

This distinctive subterranean space features tiered seating and full AV, it's perfect for panels, launches and film nights and pairs perfectly with the Vaults below.



RSA

ADDITIONAL SPACES

Flexible, characterful
rooms that adapt to your
event needs...

RSA House offers a selection of other elegant, light-filled rooms beyond the main event spaces, each with its own character, story and versatility.

ADDITIONAL SPACES



Every corner tells a story, with unique features, historic details and artwork from the RSA's archive bringing character to each space.



Whether you're hosting a reception, board meeting, breakout session or after-dinner drinks, these spaces can flex effortlessly to suit your format and guest list.

From the Tavern Room, once featured in *The Pickwick Papers*, to the Prince Philip Room with its royal grandeur and hybrid AV tech, and the Queen

Elizabeth II Room with its legacy of service, each space has been designed and preserved with care.

Together, these rooms offer adaptable charm and seamless support to the wider RSA House experience.

PRODUCTION & AV

Seamless tech, stress-free delivery – live, hybrid or virtual...

Our dedicated in-house AV team supports every step of your event journey, combining cutting-edge technology with expert, hands-on service

From initial planning through to final execution, we work closely with you to understand your technical needs and deliver tailored solutions that enhance your event experience. Whether you're hosting a high-spec hybrid presentation in the historic Great Room, a keynote speech in our theatre-style Auditorium, or an intimate screening in one of our smaller rooms, our team ensures flawless audiovisual delivery. With state-of-the-art equipment, seamless connectivity, and on-site technical support, we take care of every detail so you can focus on engaging your audience and making your event unforgettable.

No matter the size or complexity, our AV experts bring confidence and creativity to every event, making sure sound, visuals and lighting all come together perfectly to support your vision.



Where every event finds its space...

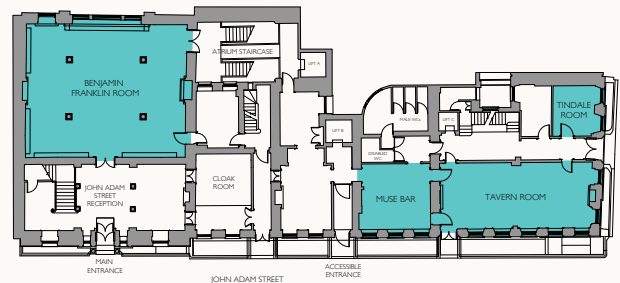
Length (m) Width (m) Height (m)	Theatre	Boardroom	U-shape	Cabaret	Classroom	Dining	Reception
Benjamin Franklin Room	100	35	36	48	36	90	150
Design Studio	24	12	-	-	12	-	24
Durham Street Auditorium	70	-	-	-	-	-	-
Folkestone Room	-	14	-	-	-	14	-
Great Room	180	35	61	80	60	130	200
Henry Cole Room	-	-	-	-	-	-	6
Muse Bar	-	-	-	-	-	-	60
Prince Philip Room	56	32	32	40	30	50	60
Queen Elizabeth II Room	30	22	22	21	21	30	40
Shipleigh Room	-	12	-	-	-	-	-
Tavern Room	53	32	32	40	30	48	60
The Coffee House	-	-	-	-	-	-	100
The Long Gallery	-	-	-	-	-	-	70
The Steps	30	-	-	-	-	-	-
Tindale Room	-	8	-	-	-	-	-
Vault 1	-	52	-	-	-	80	100
Vault 2	40	20	-	32	24	40	60
Vault 3	-	-	-	-	-	-	30
Vault 4	40	20	-	32	24	40	60
Vaults (all)	-	-	-	-	-	-	220

FLOOR PLANS

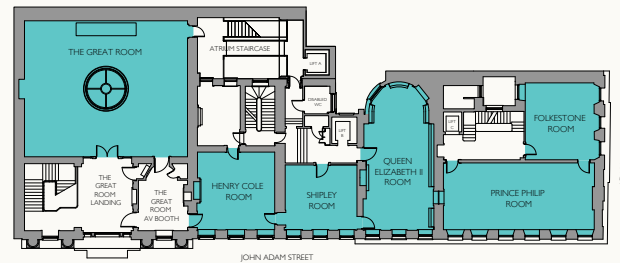
From cellars to skylights...

Explore RSA House one floor at a time, from exposed brick vaults and an atmospheric auditorium to bright meeting rooms and stately dining rooms.

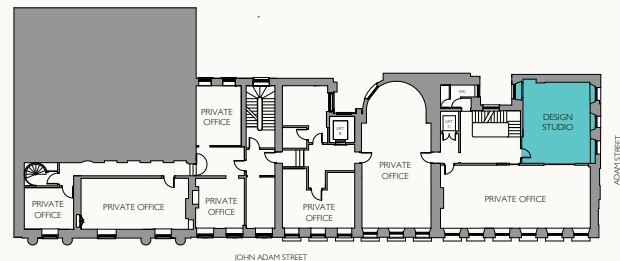
Our interconnected spaces can flex for every kind of event, big or small - it is a Georgian townhouse full of surprises.



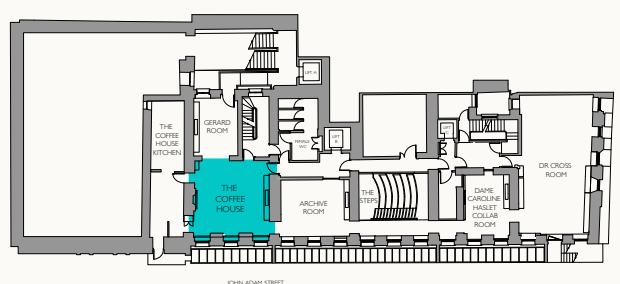
GROUND FLOOR



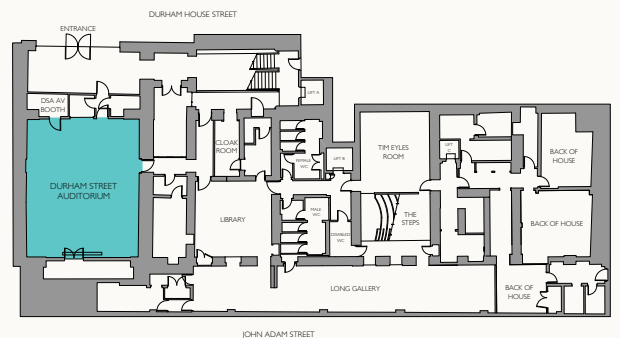
FIRST FLOOR



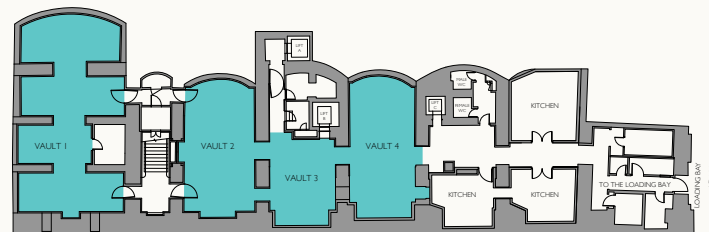
SECOND FLOOR



BASEMENT LEVEL 1

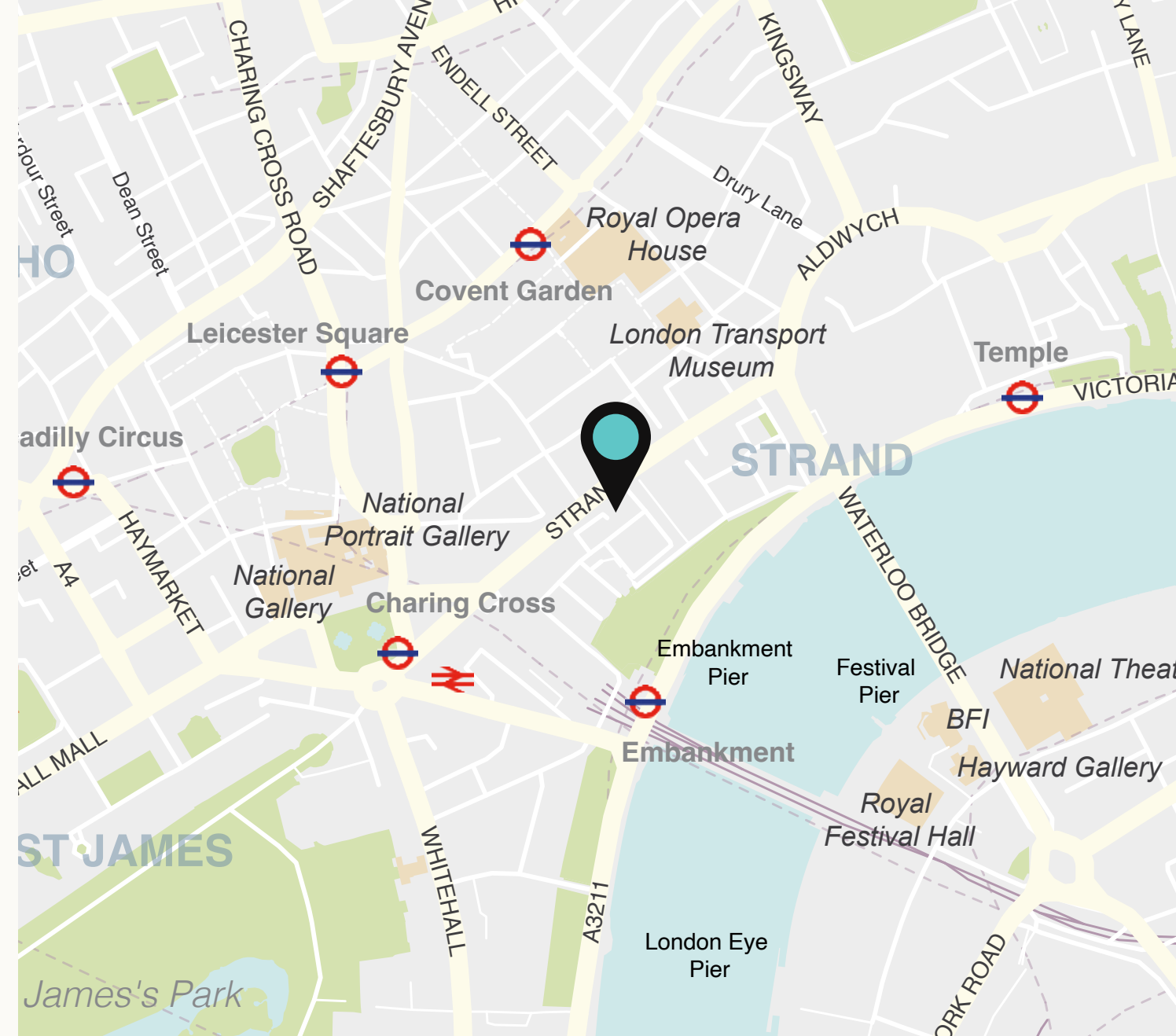


BASEMENT LEVEL 2



BASEMENT LEVEL 3

The Coffee House is a public space and is available for complimentary hire.



LOCATION

In the heart of London's cultural quarter...

Just moments away from Trafalgar Square, the Strand and Covent Garden, RSA House is perfectly placed for national and international guests. Conveniently located within metres of Charing Cross and Embankment stations, and nestled beside leafy Victoria Embankment Gardens, RSA House offers a welcome escape in the centre of the city.



RSA
HOUSE

Let's create something exceptional together...

Get in touch with our experienced team to book your tour of the House.
We look forward to delivering your seamless, unique event.

house@rsa.org.uk | +44 (0)20 7451 6855 | thersa.org

8 John Adam Street London WC2N 6EZ

Registered charity in England and Wales 212424